

**HUPX+SEE SPOT Support**

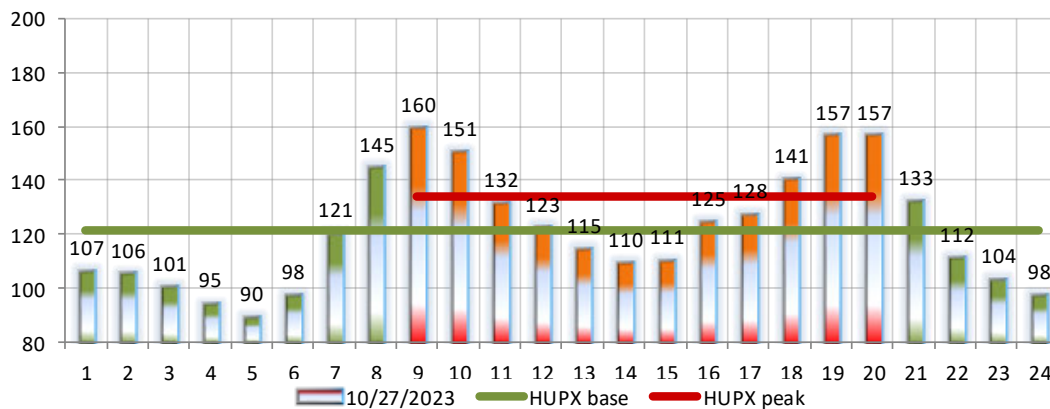
Day-ahead and Week-ahead HUPX forecast

**HUPX Forecast for 27.10.2023**

Update at 26.10.2023 - 10:00 CET

**HU Base: 121.7 EUR/MWh****DE Base: 119.8 EUR/MWh****IT Base: 135 EUR/MWh**

(forecast assumes that CROPEX, SEEPEX and HUPX are hypothetically coupled)



Hour	1	2	3	4	5	6	7	8	9	10	11	12	13	14	15	16	17	18	19	20	21	22	23	24
Price	107	106	101	95	90	98	121	145	160	151	132	123	115	110	111	125	128	141	157	157	133	112	104	98

**Table of content**

<b>1. Critical grid elements (FBMC)</b>	2
<b>2. Week-ahead forecast</b>	3
3. HUPX sensitivity	9
4. Aggregated curves	10
5. Market arbitration profits	11
6. Thermal unit outages / maintenances	12
7. Temperature forecast	15
8. Temperature deviation forecast	16
9. Consumption forecast	17
10. Consumption forecast change	18
11. Wind and solar forecast	19
12. Hydro generation forecasts	20
13. NTC and NTC changes	21
14. Generation price curves	22
15. Activation of thermal units	24
16. Electricity export per country	26
17. SPOT Market Prices	27
18. Daily Auctions	27
19. FUTURES - DE, IT, HU	28
20. Power flows - all SEE borders	30

**Week-ahead forecast summary****Full Week-ahead report: pages 3-7****HUPX Forecast for Week 44**

Update at 26.10.2023 - 08:30 CET

HU Base: 95 EUR/MWh

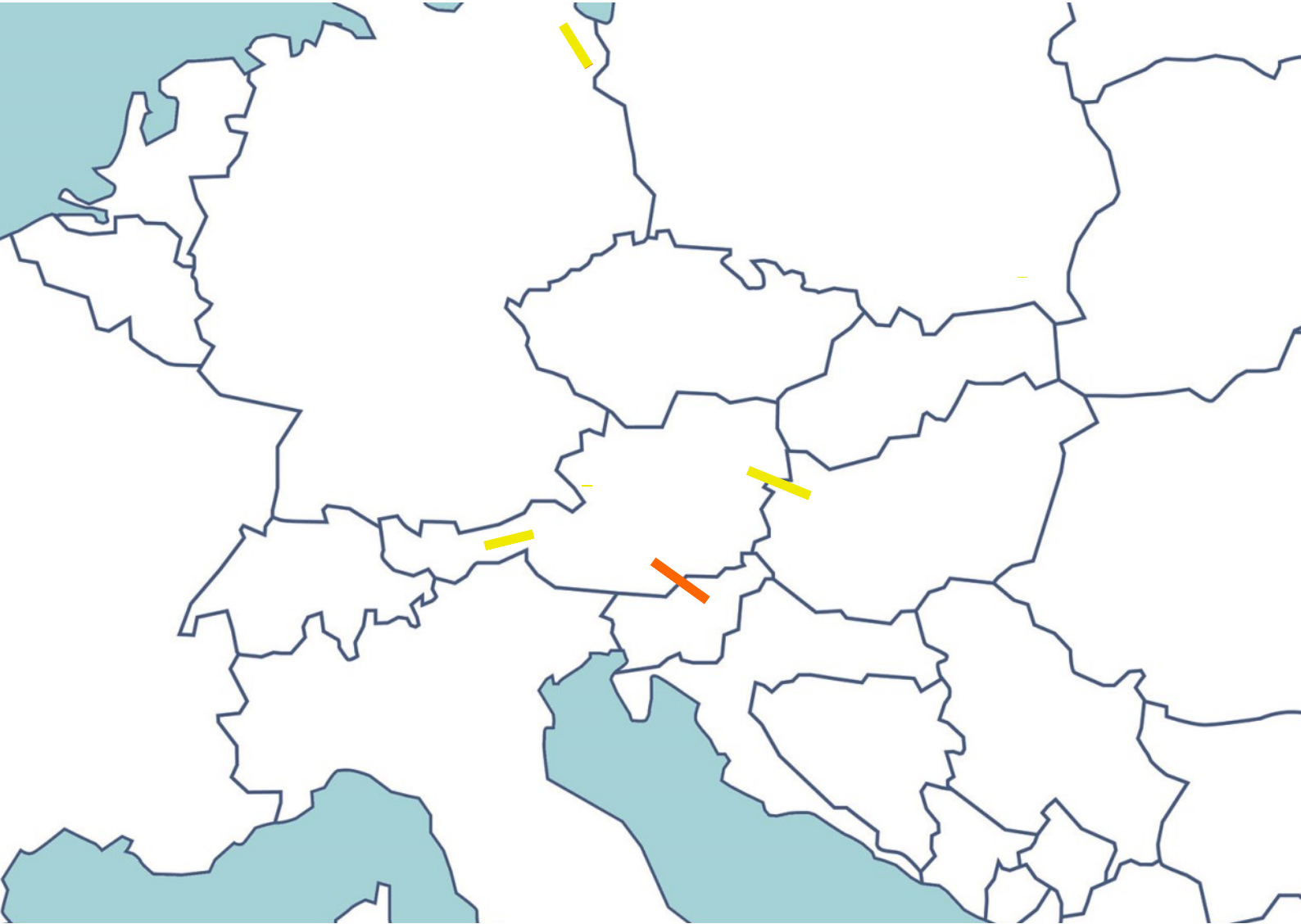
DE Base: 80 EUR/MWh

ITA Base: 131.5 EUR/MWh

Week-ahead forecast and analytics are located at the pages 3-7:

- Weekly forecast summary
- Transmission grid, maintenances of generation units
- Temperature and precipitation forecasts
- NTC forecast

## 1. Critical grid elements (FBMC)



Line	Location	Impact	H1	H2	H3	H4	H5	H6	H7	H8	H9	H10	H11	H12	H13	H14	H15	H16	H17	H18	H19	H20	H21	H22	H23	H24
1 Pasewalk - Vierraden	DE INTERNAL	LOW	■																	■		■				
2 Obersielach - Podlog	AT-SI	MED	■	■	■	■	■	■			■						■			■		■			■	
3 Pleinting - St. Peter	DE-AT																									
4 Vill Thaur - Silz	AT INTERNAL	LOW	■																		■					
5 Sarasdorf - Zurndorf	AT INTERNAL																									
6 Zurndorf - Gyoe	AT-HU																									
7 Nosovice - Varin	CZ-SK																									
8 Slavetice - Durmrohr	CZ-AT																									
9 Levice - God	SK-HU																									
10 Gonyu - Gyoe	HU INTERNAL																									
11 Gyoe - Zurndorf	HU-AT																									
12 Gyoe - Oroszlany	HU																									
13 Kainachtal 1- Maribor	AT-SI																									
14 Kainachtal 2- Maribor	AT-SI																									
15 Sokolnice - Krizovany	CZ-SK																									
16 V.Dur - Levice 1	SK INTERNAL																									
17 V.Dur - Levice 2	SK INTERNAL																									
18 Dunamenti - Oroszlany	HU INTERNAL																									
19 Vierraden - Krajnik	DE-PL																									
20 Rohrsdorf - Hradec	DE-CZ																									
21 Krosno Iskrzynia - Rzeszow	PL INTERNAL																									
22 Wien Suedost - Gyoe	AT-HU	LOW	■									■	■	■	■	■	■	■	■	■	■	■	■	■	■	
23 Westtirol 1 - Westtirol 2	AT INTERNAL																									
24 Hessenberg - Zeltweg	AT INTERNAL																									
25 Sokolnice - Zaya	CZ-AT																									
26 Liskovec - P. Bystrica	CZ-SK																									
27 Strass - Zell 274A	AT INTERNAL																									
28 Hessenberg - Weissenbach	AT INTERNAL																									
29 Buers - Meiningen	AT INTERNAL																									

## 2. Week-ahead forecast

### HUPX Forecast for Week 44

Update at 26.10.2023 - 08:30 CET

HU Base: 95 EUR/MWh

DE Base: 80 EUR/MWh

ITA Base: 131.5 EUR/MWh

Update: Temperature forecast has improved, and temperatures are now forecasted to be at the same level as in WK42. But, drop of CWE prices might be bullish for HU-DE spread.

There are many bullish elements for trading Wk44 in Hungary. Two most important elements to observe during Wk43 are:

- Development of French - German price spread
- Wind forecast changes in SEE

Balance of SEE in Wk42 did improve as a result of very high wind generation, but it is risky to trade Wk44 at current wind forecasts. Also, the Hungarian price of Wk44 is highly dependent on DE-FR spread development.

In Wk42, one of the reasons for lower HU-DE spread was that the French market was priced 11.5 EUR/MWh below EPEX-DE. If the French market is below or above the German market has a huge impact on Core > SEE Max Exchange and price difference - and SEE will be importer during WK44.

But, for Wk44, French market is priced just 2.6 EUR/MWh above EPEX-DE, which if materialize on spot might result with much less Core>SEE flows and higher potential for HUPX settlement above EPEX-DE. However, there is a risk if such spread will be seen on settlement. On Friday 13.10.2023 Wk43 French futures were priced 2.5 EUR/MWh ABOVE German futures, while on 20.10.2023, French Wk43 futures were priced 10.4 EUR/MWh BELOW German futures.

NPP Krsko and NPP Kozloduy will remain offline throughout WK44. 1,600 MW in nuclear capacity in the region is out (Kozloduy + Krsko) and the region will be highly sensitive to missing base-load energy, especially in hours H7-H9 and H18-H22, which have very high consumption but no benefit of solar generation.

In addition, further drop of solar generation should be expected, as well as rise of consumption in peaks, due to missing prosumer solar generation (accounted as negative consumption).

Wind generation was above average in Wk42. As the region will be short, risk of average of below-average wind generation on some days is present, and days with low wind will have a risk of occasional spiking above the Italian market.

Unless there is a extreme improvement of hydro generation balance of Wk44 will be significantly worse than in Wk42, which settled 11.4 EUR/MWh above EPEX-DE

- Consumption will go up by 500 MW - which will be visible especially in peaks, due to lower prosumer generation
- Solar generation will be lower
- Hydro generation will increase by 500-100 MW
- Nuclear generation will be the same
- Coal fired generation will not improve unless there is even higher spike of consumption
- Gas-fired generation will not be significantly higher

Also:

- Although Hungarian futures are priced higher than in Wk42, Czech futures are at similar level for Wk42 and Wk44, meaning that there will be no price-induced reaction of Czech coal generation.
- It can not be excluded that HUPX will be settling above Italian market in hours H7-H8 and H18-H22
- HUPX can settle bearish in Wk43 due to strong rain in Adriatic region, very warm weather and negative FR-DE spread. Bearish effects of the WK43 will not be present in Wk44.

- Consumption in Wk44 might be surprisingly high comparing to Wk43, as temperatures will be close to 14 degrees - which is a threshold for high sensitivity of consumption on temperatures. Wk42 did have above average temperatures but it was just 1.2 degrees colder than previous weeks, which resulted with 1270 MW rise of consumption compared to Wk41 - this is far above common reaction of consumption on temperatures. Solar-prosumer effect had at least 500 MW effect, as cloud coverage was much higher in Romania, Bulgaria and Hungary. However, Wk 43 will be 2 degrees warmer, which should result with consumption drop. But, consumption-weighted temperature Wk44 will be 2 degrees lower in SEE outside Greece, resulting in some 500 MW higher consumption than in Wk42, and at least 1,000 MW higher than in Wk43. Also, lower solar irradiation (shorter days and much higher cloud coverage than in Wk41/Wk42) will result with less negative consumption in peaks, especially in Hungary.
- Hydro generation will improve significantly compared to Wk41 and Wk42. Wk42 had a 500 MW increase in hydro generation compared to Wk41, and precipitation is expected to continue during Wk43 and Wk44. Significant precipitation is expected in Wk43, which will be reflected on Danube flow during Wk44. It is fair to expect at least 500-1000 MW improvement of hydro generation compared to Wk42.
- Gas fired generation should be higher as temperatures will drop and the heating season has started. However, this will not have a significant impact, as outside Greece gas generation increase is not significant to have a visible impact on market prices. In past 2 years, gas-fired generation outside Greece was going visibly up after Wk44. In Greece, there is a risk that gas-fired generation will go down.
- Maintenance plan of Wk44 will be more relaxed than in Wk43 and Wk42. Compared to Wk43, availability will be some 370 MW higher, however most of this increase comes from coming back to operation of TPP Isalnita in Romania (300 MW), which was not working a month prior to maintenance start. It is questionable if Isalnita will start with operation after coming back online. Compared to Wk42, availability will be 700 MW higher, out of which 200 MW in Greece (Heron being fully online). Still, outside Greece improvement is 500 MW, again out of which Isalnita improvement accounts for 300 MW. NPP Krsko and the 1000 MW unit in NPP Kozloduy will remain offline.
- There will be two interconnections in maintenance. BG-RO Stupina - Varna maintenance can result with

up to 500 MW NTC reduction, but this will not have an important impact on HU prices as Kozloduy is out. SK-UA line will also have no impact as commercial flows are quite low.

- Solar generation might be lower than in Wk43 and Wk42, as there is more precipitation forecasted in Greece (Greece participates with 40-50% in total SEE solar generation). In addition, although temperatures are forecasted to be above average, deviation from average is lower than in Wk42 and Wk43. In addition, November on average has a huge drop in solar generation compared to the period April-October.

**Important transmission lines maintenances**

- Maritsa 2 G4 (BG), 177 MW, 03.09.2023-31.10.2023 Going IN
- Aloumnio ST (GR), 334 MW, 01.09.2023-31.10.2023 Going IN
- Heron GT 01 (GR), 49 MW, 30.10.2023-10.11.2023 Going OUT

**In and Out of units during WK44**

- Kelenfoldi GT (HU), 125 MW, 02.10.2023-21.10.2023 Going IN (WK42 Saturday)
- Matrai G4 (HU), 224 MW, 22.07.2023-28.10.2023 Going IN

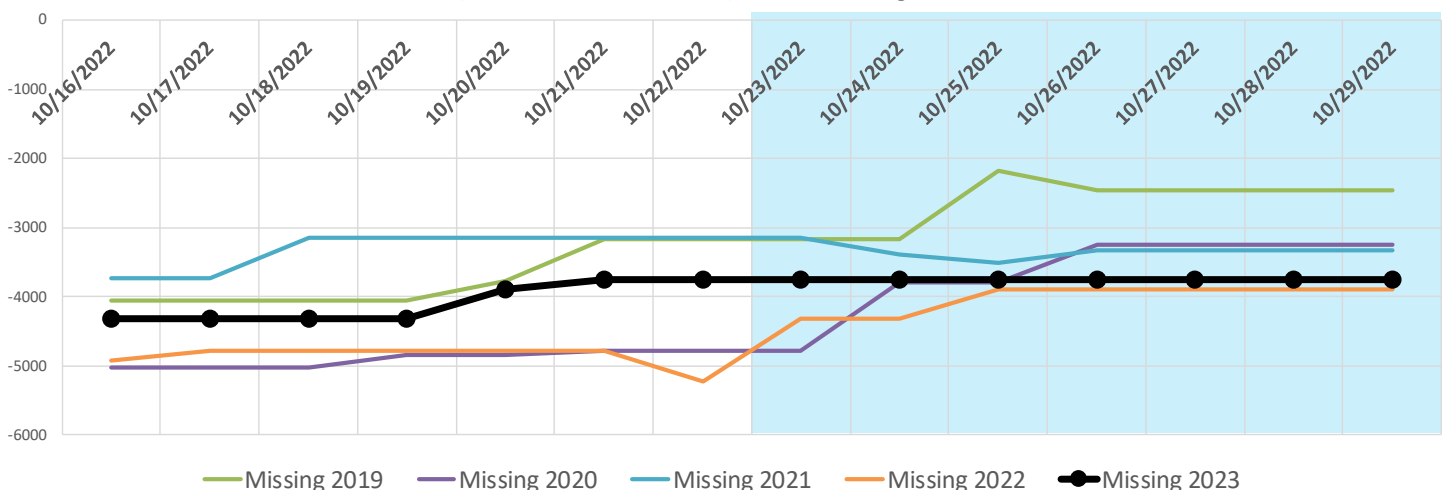
**Offline units during Wk44**

- Matrai G4 (HU), 224 MW, 22.07.2023-15.11.2023
- Bucuresti S G3 (RO), 84 MW, 03.07.2023-12.11.2023
- Turceni G7 (RO), 267 MW, 31.05.2023-31.12.2023
- Kozloduy G10 (BG), 1040 MW, 09.10.2023-20.11.2023
- Korinthos Power (GR), 433 MW, 17.08.2023-10.12.2023
- Aliveri G5 (GR), 417 MW, 19.08.2023-18.11.2023
- Megalopoli G4 (GR), 256 MW, 01.10.2023-30.11.2023
- AG Dimitrios G5 (GR), 342 MW, 16.09.2023-12.11.2023

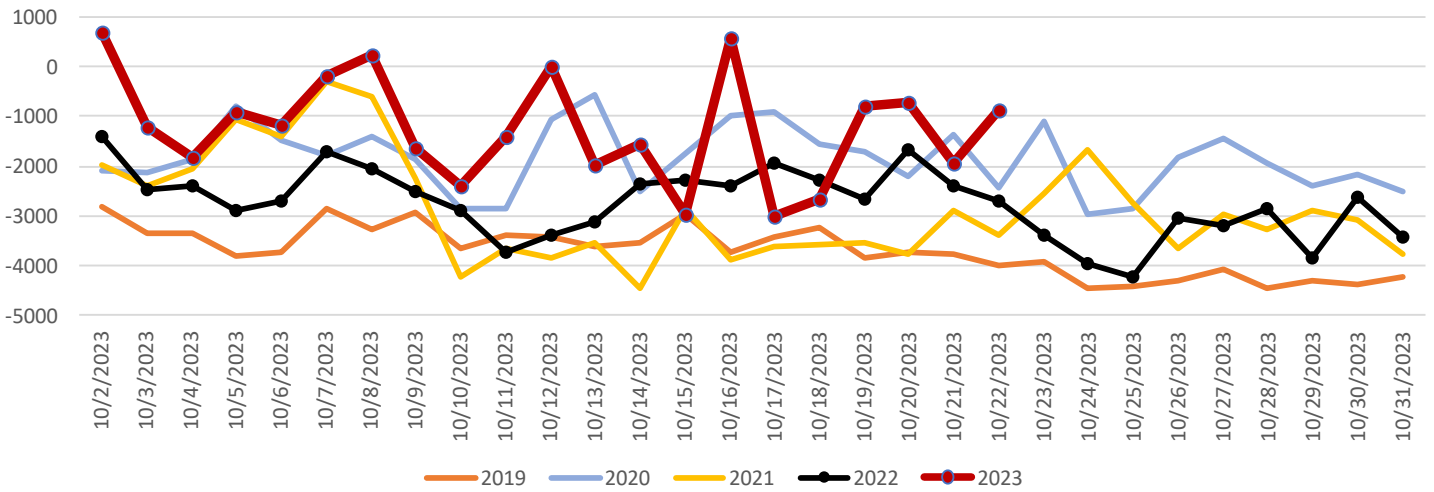
**Public holidays**

- 31.10. - Slovenia - Reformation Day (Tuesday)
- 01.11. - All Saints Day – Slovenia, Hungary, Croatia, Bosnia (regional) (Wednesday)

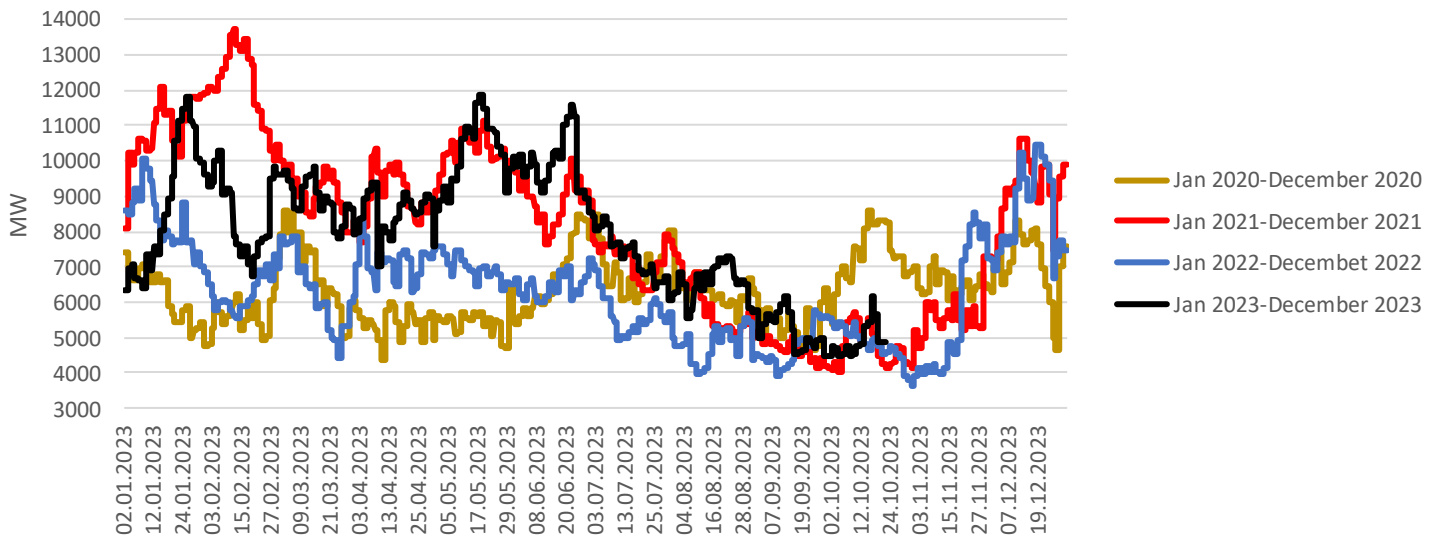
Wk43 and Wk44 Maintenances (RS, HU, BG, RO, GR, SI) - MW missing



Peak SEE Balance = HU+SI>AT, HU>SK, RO+HU>JA, BG+GR>TR, SI+MNE+GR>IT (daily MW AVG)



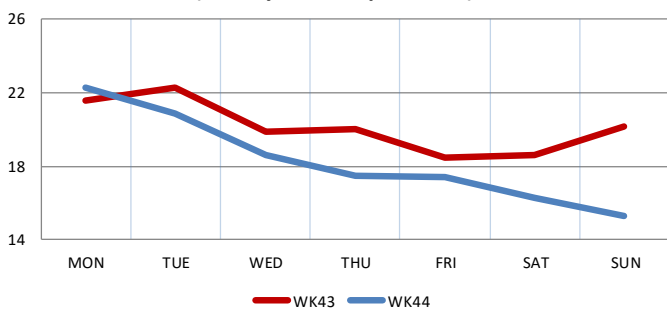
SEE daily average hydro generation: January-December (Monday-Friday)



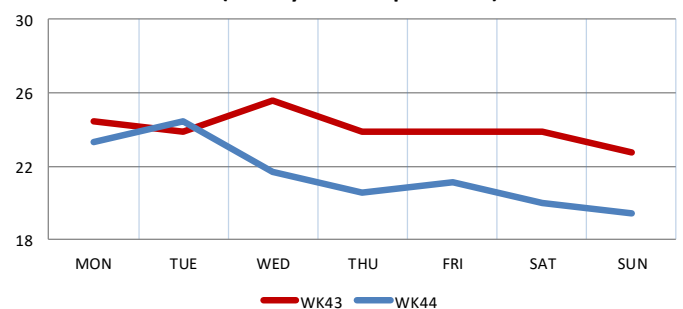
## Temperature forecast

Regional consumption weighted average temperature

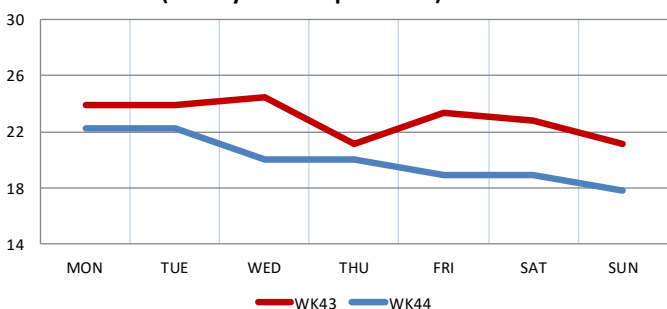
HU+exYU+AL (weekly max temperatures)



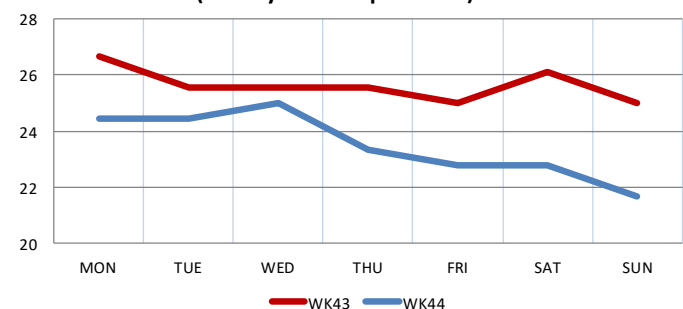
RO - Bucharest (weekly max temperatures)



BG - Sofia (weekly max temperatures)



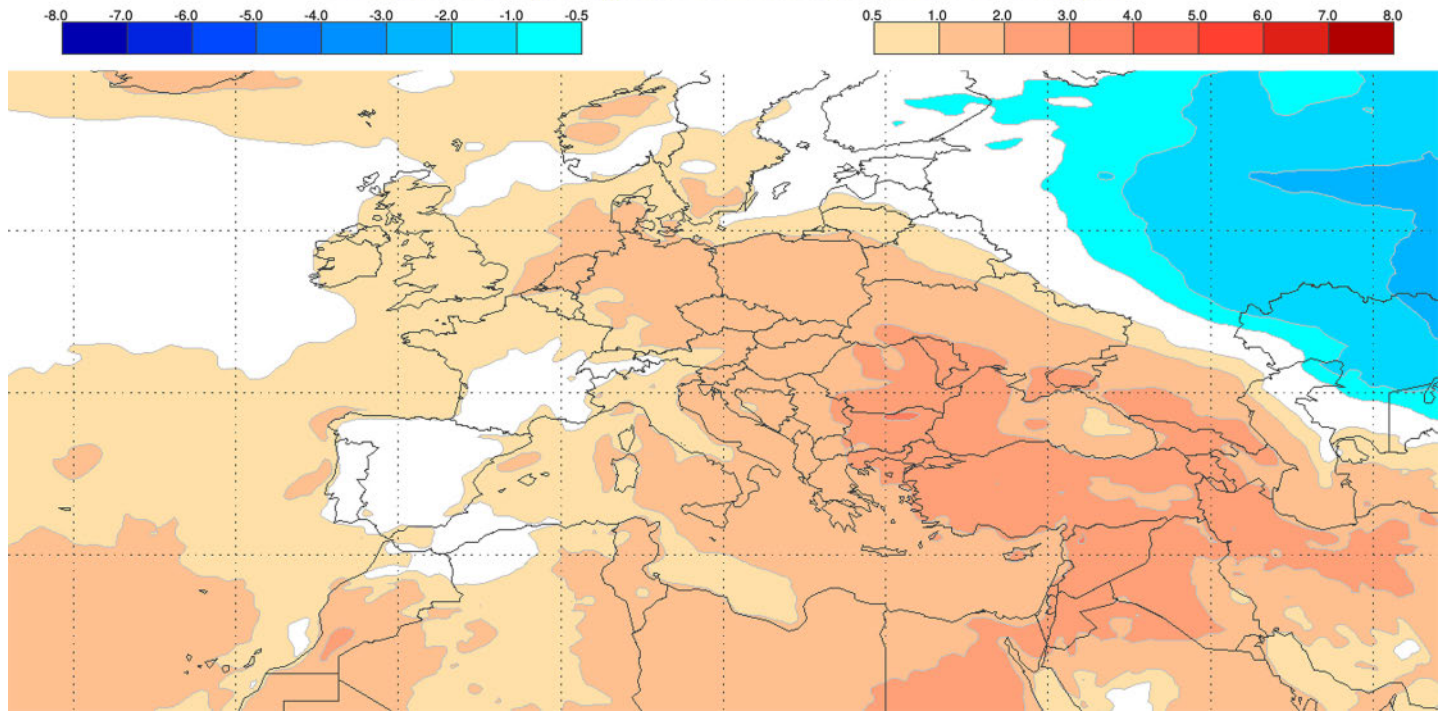
GR - Athens (weekly max temperatures)



### Monthly Temperature (T2m) Anomalies valid for week: from 29 October to 04 November 2023

Map processed by EFFIS System based on ECMWF Monthly Forecast System initiated on 21 October 2023

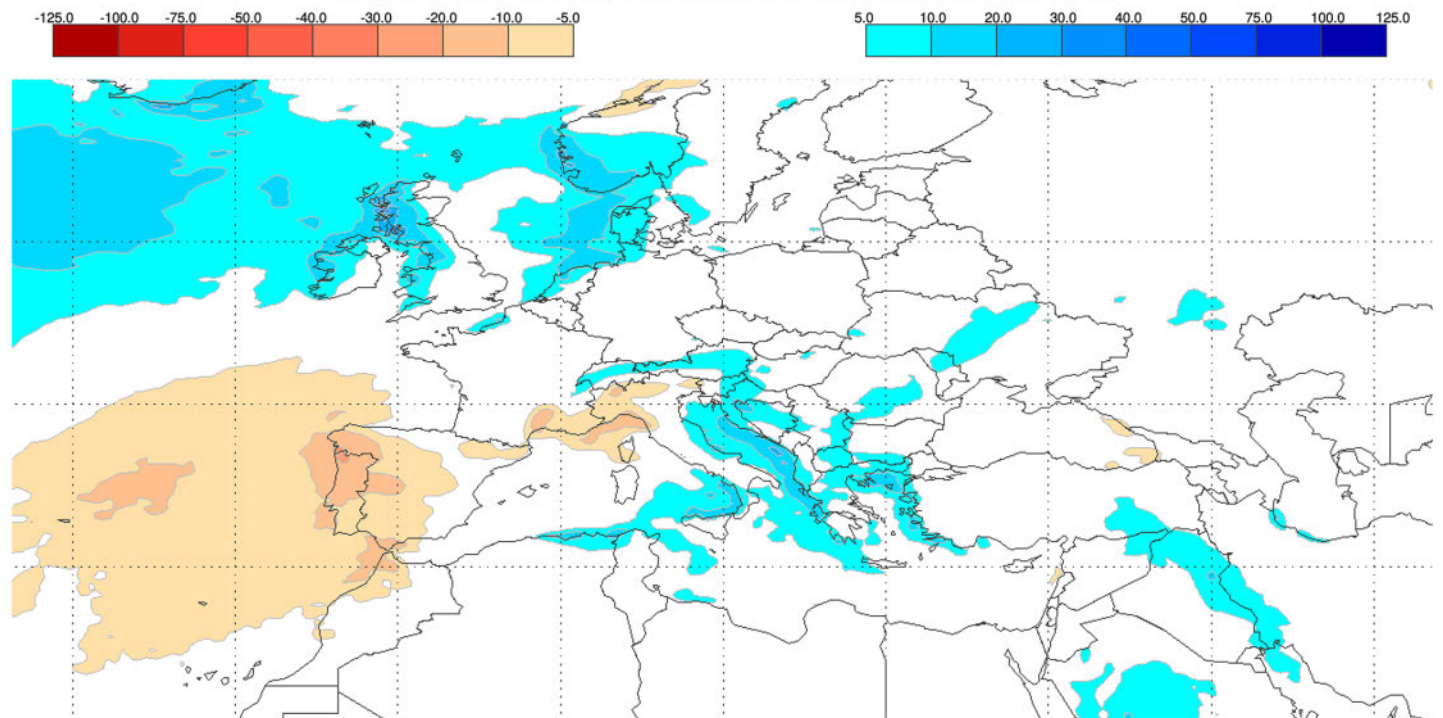
Estimated deviation (anomaly) of the mean from model climate in Celsius degrees



### Monthly Rain Anomalies valid for week: from 29 October to 04 November 2023

Map processed by EFFIS System based on ECMWF Monthly Forecast System initiated on 21 October 2023

Estimated deviation (anomaly) of the mean from model climate in millimeters (mm)



Source: European Commission

## NTC forecast and changes

WK44	MON 0-1	TUE 0-1	WED 0-1	THU 0-1	FRI 0-1	SAT 0-1	SUN 0-1
AT>SI	0	0	0	0	0	0	0
AT>HU	0	0	0	0	0	0	0
CZ>SK	0	0	0	0	0	0	0
SK>HU	0	0	0	0	0	0	0
UA>HU	0	0	0	0	0	0	0
RO>RS	300	300	0	0	0	0	0
RO>HU	0	0	0	0	0	0	0
RO>BG	1560	1560	0	0	0	0	0
HU>RS	700	700	0	0	0	0	0
RS>HU	800	800	0	0	0	0	0
BG>RS	300	300	0	0	0	0	0
BG>MK	459	459	0	0	0	0	0
BA>RS	400	400	0	0	0	0	0
BA>HR	500	500	0	0	0	0	0
RS>AL	400	400	0	0	0	0	0
ME>AL	300	300	0	0	0	0	0
RS>ME	300	300	0	0	0	0	0
RS>HR	150	150	0	0	0	0	0
RS>MK	500	500	0	0	0	0	0
AL>GR	400	400	0	0	0	0	0
MK>GR	400	400	0	0	0	0	0
BG>GR	750	750	0	0	0	0	0

## NTC change comparing to previous week

WK44 - WK43	MON 0-1	TUE 0-1	WED 0-1	THU 0-1	FRI 0-1	SAT 0-1	SUN 0-1
AT>SI	0	0	0	0	0	0	0
AT>HU	0	0	0	0	0	0	0
CZ>SK	0	0	0	0	0	0	0
SK>HU	0	0	0	0	0	0	0
UA>HU	0	0	0	0	0	0	0
RO>RS	0	0	-300	-300	-300	-300	-300
RO>HU	0	0	0	0	0	0	0
RO>BG	0	0	-1560	-1560	-1560	-1560	-1560
HU>RS	0	0	-700	-700	-700	-700	-700
RS>HU	0	0	-800	-800	-800	-800	-800
BG>RS	0	0	-300	-300	-300	-300	-300
BG>MK	0	0	-459	-459	-459	-459	-459
BA>RS	0	0	-400	-400	-400	-400	-400
BA>HR	0	0	-500	-500	-500	-500	-500
RS>AL	0	0	-400	-400	-400	-400	-400
ME>AL	0	0	-300	-300	-300	-300	-300
RS>ME	0	0	-300	-300	-300	-300	-300
RS>HR	0	0	-150	-150	-150	-150	-150
RS>MK	0	0	-500	-500	-500	-500	-500
AL>GR	0	0	-400	-400	-400	-400	-400
MK>GR	0	0	-400	-400	-400	-400	-400
BG>GR	0	0	-750	-750	-750	-750	-750

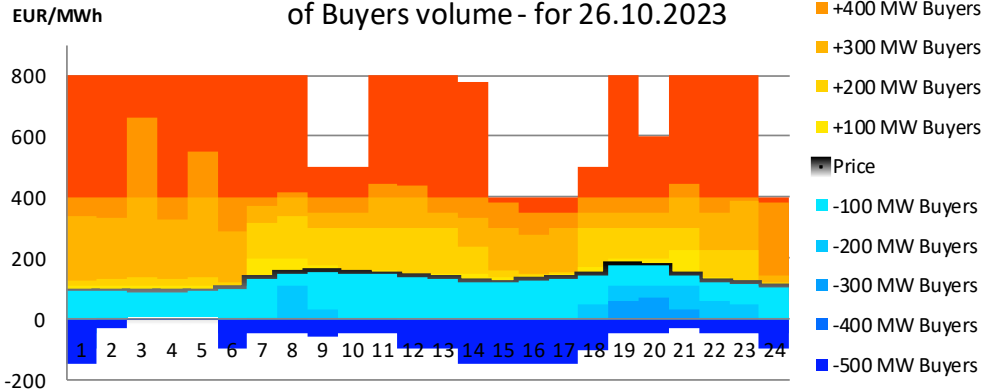
## Planned maintenances for Week 44

TPPs		Type	MW	From	To
Matrai G4	HU	Coal	224	01.05.2023	14.11.2023
Maritsa2 G4	BG	Coal	177	03.09.2023	31.10.2023
Kozloduy G10	BG	Nuclear	1040	09.10.2023	20.11.2023
Maritsa 2 G7	BG	Coal	218	15.10.2023	10.12.2023
Turceni G7	RO	Coal	267	01.06.2023	31.12.2023
Iernut G5	RO	Gas	188	22.08.2023	31.10.2023
Turceni G4	RO	Coal	265	01.10.2023	31.10.2023
Rovinari G3	RO	Coal	290	01.10.2023	31.10.2023
Alouminio ST	GR	Gas	334	01.09.2023	31.10.2023
K.Power	GR	Gas	433	28.08.2023	01.12.2023
Aliveri G5	GR	Gas	417	19.08.2023	18.11.2023
Ag Dimitrios G5	Gr	Coal	342	16.09.2023	12.11.2023
Heron GT01	GR	Gas	49	30.10.2023	10.11.2023

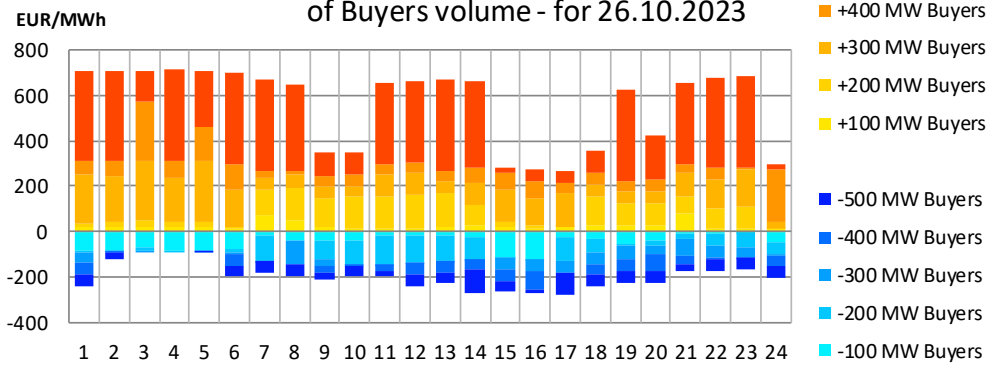
### 3. HUPX sensitivity

Potential change of HUPX price in case of more / less buyers

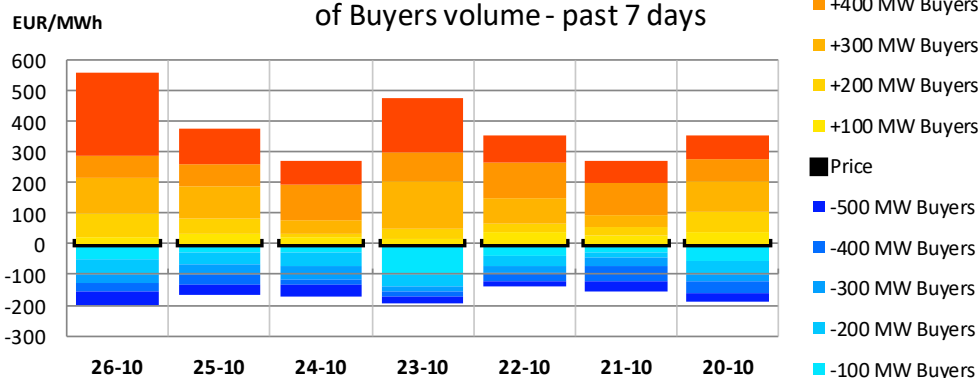
**HUPX hourly price change** In case of increase/decrease of Buyers volume - for 26.10.2023



**HUPX relative price change** in case of increase/decrease of Buyers volume - for 26.10.2023

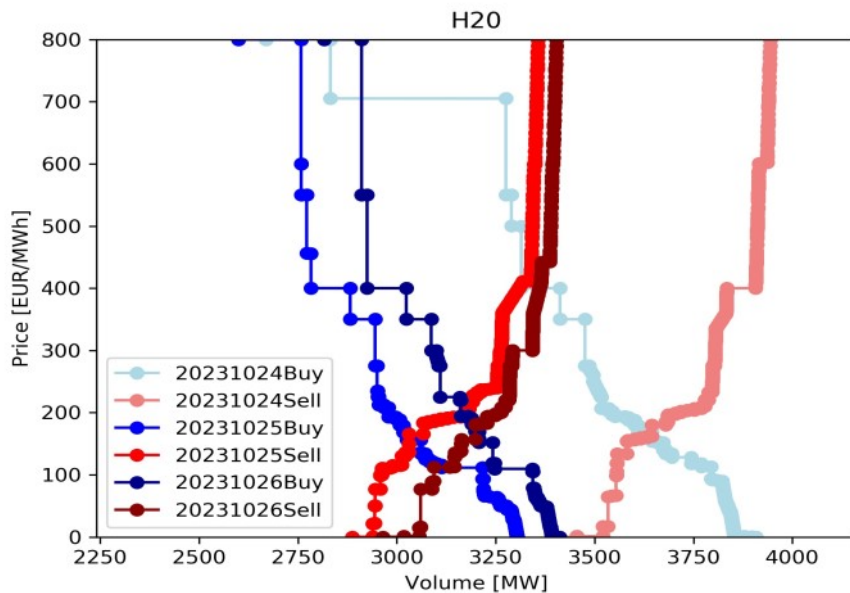
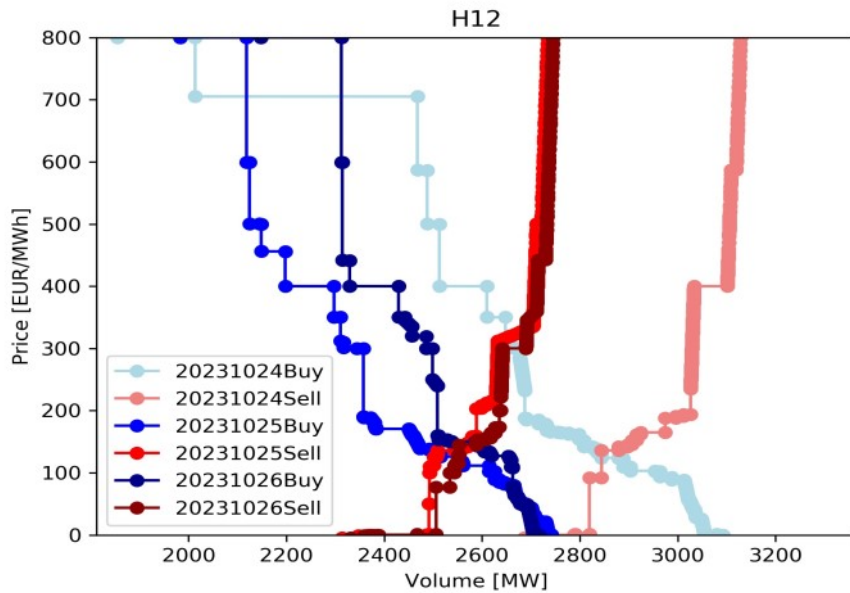
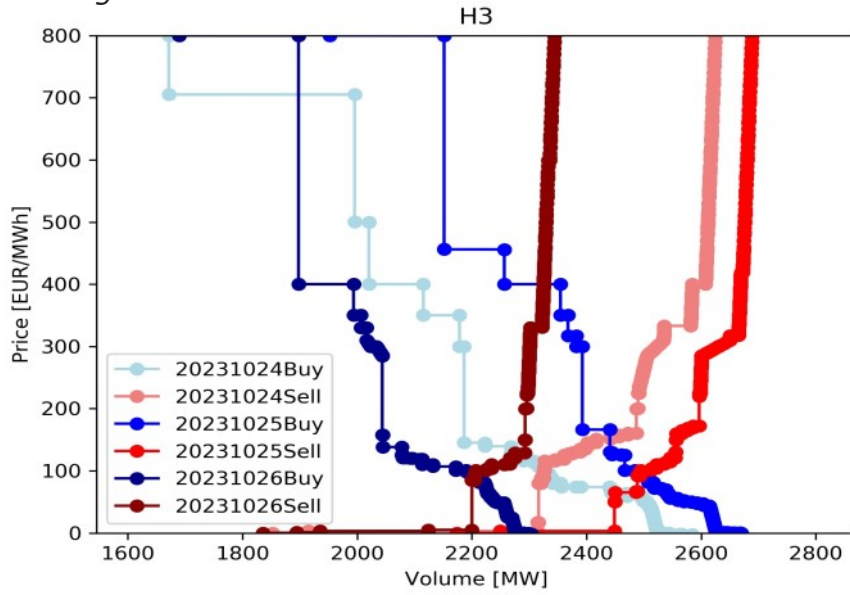


**HUPX BASE price change** In case of increase/decrease of Buyers volume - past 7 days



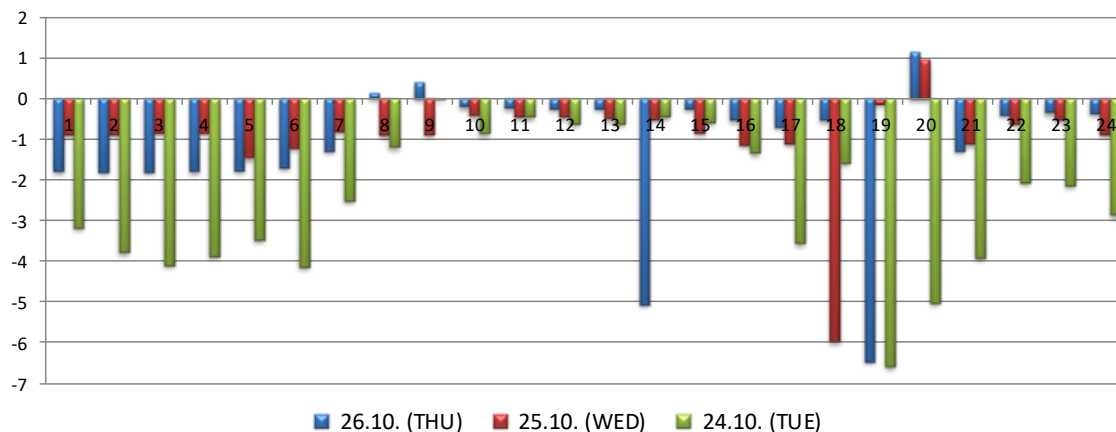
## 4. Aggregated curves for the past 3 days

Including block offers



## 5. Market arbitration profits and spreads

EUR/MWh **HU > GR** (price spread - daily capacity cost HU>RS, RS>MK, MK>GR)



**Arbitration profit** (spread, daily capacity, EUR/MWh)

	THU	WED	TUE	MON	SUN	SAT	FRI
<b>HU &gt; GR</b>	26.10.	25.10.	24.10.	23.10.	22.10.	21.10.	20.10.
Base	-1.12	-0.93	-2.45	1.23	-1.84	8.40	-9.88
Peak	-1.07	-0.96	-1.81	5.21	-7.45	3.65	-9.87

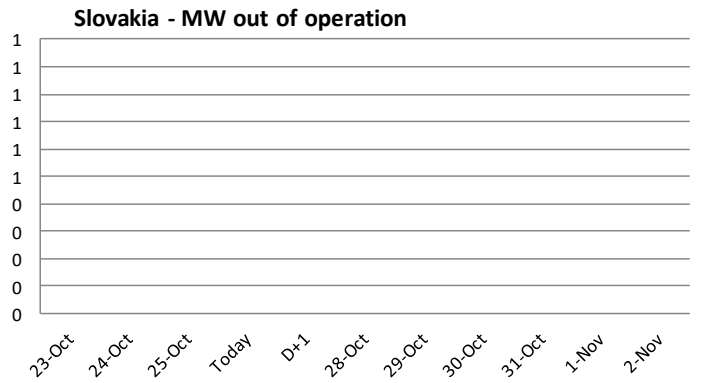
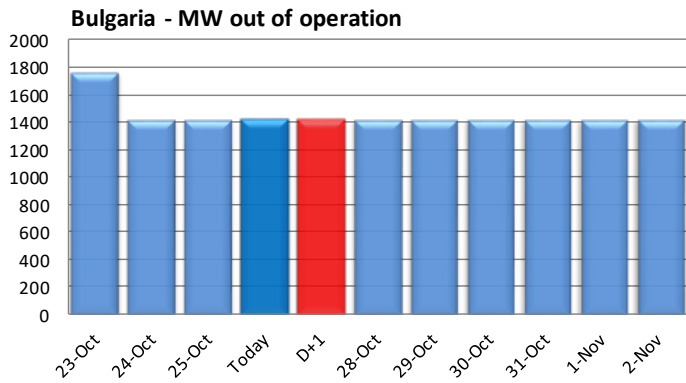
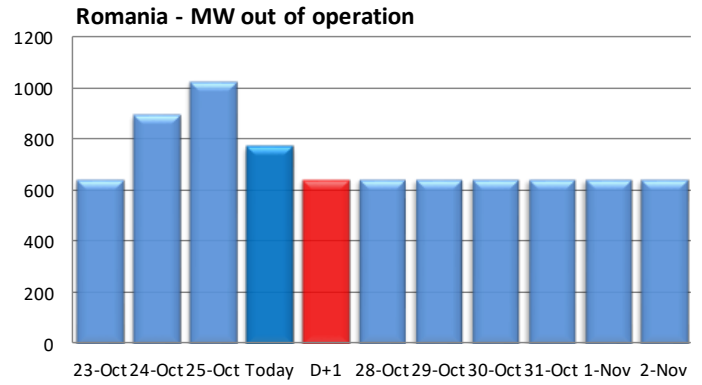
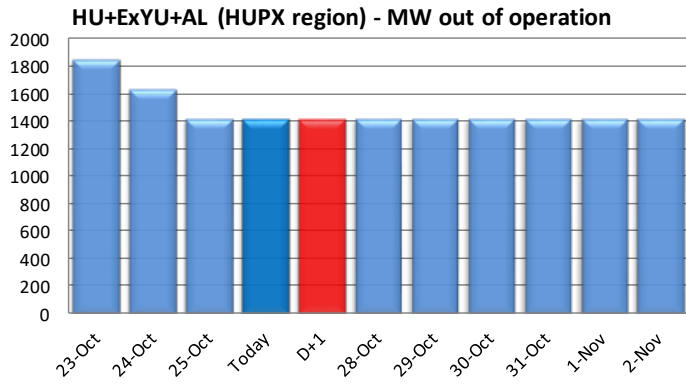
**Price spread** (EUR/MWh)

	THU	WED	TUE	MON	SUN	SAT	FRI
<b>HU - GR</b>	26.10.	25.10.	24.10.	23.10.	22.10.	21.10.	20.10.
Base	0.50	0.39	0.38	-3.88	-7.40	-12.25	1.81
Peak	0.87	0.55	0.78	-6.29	0.53	-6.04	4.78

Symbol \* before price: one or more hours with zero ATC was offered for that product, on daily auction  
 ATC = 0 : whole product had 0 ATC on daily auctions, or for HU > GR: one of borders HU > RS > MK > GR

## 6. Thermal unit outages and maintenances

	23-Oct	24-Oct	25-Oct	26-Oct	27-Oct	28-Oct	29-Oct	30-Oct	31-Oct	1-Nov	2-Nov
<b>HU+ExYU+AL</b>	1,854	1,630	1,420	1,420	<b>1,420</b>	1,420	1,420	1,420	1,420	1,420	1,420
<b>Romania</b>	643	896	1,026	773	<b>643</b>	643	643	643	643	643	643
<b>Bulgaria</b>	1,766	1,423	1,423	1,423	<b>1,423</b>	1,423	1,423	1,423	1,423	1,423	1,423
<b>Slovakia</b>	0	0	0	0	<b>0</b>	0	0	0	0	0	0



## 6. Thermal unit outages and maintenances

### Live outage info

TPPs		Type	MW	Event	From	To

### ACTIVE Unplanned outages relevant for 27.10.2023

TPPs		Type	MW	Event	From	To
Paroseni CA	RO	Coal	130	Outage	25.10.2023, 00:00	27.10.2023, 23:59
Turceni G5	RO	Coal	253	Outage	23.10.2023, 12:00	25.10.2023, 23:59
Galabovo G2	BG	coal	343	Outage	17.10.2023, 23:00	02.11.2023, 23:00
NEK Krsko	SLO	Nuclear	696	Outage	06.10.2023, 05:00	16.11.2023, 00:00
Kakanj G5	BA	Coal	100	Outage	25.08.2023, 23:00	
Tuzla G6	BA	Coal	200	Outage	16.06.2023, 23:00	

### RECENT Unplanned outages relevant for past 3 days

TPPs		Type	MW	Event	From	To
Matrai G5	HU	Coal	224	Outage	21.10.2023, 02:00	24.10.2023, 15:00
Bobov Dol G2	BG	Coal	190	Outage	23.10.2023, 14:30	24.10.2023, 14:30
TENT A G2	RS	Coal	210	Outage	22.10.2023, 14:00	24.10.2023, 14:00
Kakanj G7	BA	Coal	200	Outage	20.10.2023, 15:00	24.10.2023, 11:00

## 6. Thermal unit outages and maintenances

### Planned maintenances relevant for 27.10.2023

TPPs		Type	MW	From	To
Maritsa2 G4	BG	Coal	177	03.09.2023	31.10.2023
Isalnita G7	RO	Coal	292	30.09.2023	29.10.2023
Alouminio ST	GR	Gas	334	01.09.2023	31.10.2023

### Planned maintenances for Week 44

TPPs		Type	MW	From	To
Matrai G4	HU	Coal	224	01.05.2023	14.11.2023
Maritsa2 G4	BG	Coal	177	03.09.2023	31.10.2023
Kozloduy G10	BG	Nuclear	1040	09.10.2023	20.11.2023
Maritsa 2 G7	BG	Coal	218	15.10.2023	10.12.2023
Turceni G7	RO	Coal	267	01.06.2023	31.12.2023
Iernut G5	RO	Gas	188	22.08.2023	31.10.2023
Turceni G4	RO	Coal	265	01.10.2023	31.10.2023
Rovinari G3	RO	Coal	290	01.10.2023	31.10.2023
Alouminio ST	GR	Gas	334	01.09.2023	31.10.2023
K.Power	GR	Gas	433	28.08.2023	01.12.2023
Aliveri G5	GR	Gas	417	19.08.2023	18.11.2023
Ag Dimitrios G5	Gr	Coal	342	16.09.2023	12.11.2023
Heron GT01	GR	Gas	49	30.10.2023	10.11.2023

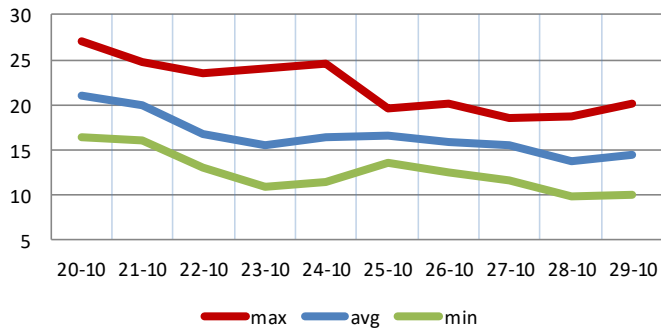
### Planned in next 30 days

TPPs		Type	MW	from	to
Matrai G4	HU	Coal	224	01.05.2023	14.11.2023
Turceni G7	RO	Coal	267	01.06.2023	31.12.2023
Bucuresti S G3	RO	Gas	84	03.07.2023	12.11.2023
Isalnita G7	RO	Coal	292	30.09.2023	29.10.2023
Maritsa2 G4	BG	Coal	177	03.09.2023	31.10.2023
Kozloduy G10	BG	Nuclear	1040	09.10.2023	20.11.2023
Maritsa 2 G7	BG	Coal	218	15.10.2023	10.12.2023
Aliveri G5	GR	Gas	417	19.08.2023	18.11.2023
Alouminio ST	GR	Gas	334	01.09.2023	31.10.2023
K.Power	GR	Gas	433	28.08.2023	01.12.2023
Ag Dimitrios G5	Gr	Coal	342	16.09.2023	12.11.2023
Megalopoli G4	GR	Gas	256	01.10.2023	30.11.2023
Komotini ST	GR	Gas	476	11.11.2023	30.11.2023
Heron GT01	GR	Gas	49	30.10.2023	10.11.2023

## 7. Temperature forecast

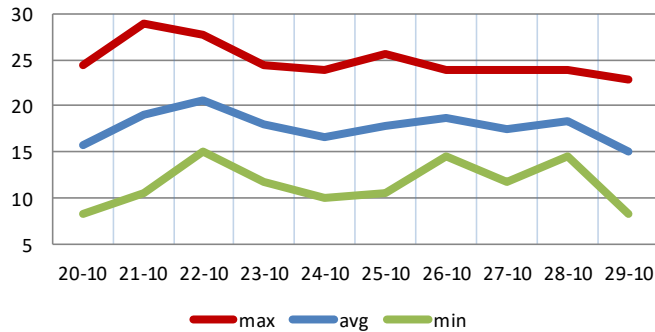
Regional consumption weighted average temperature

**HU+exYU+AL**



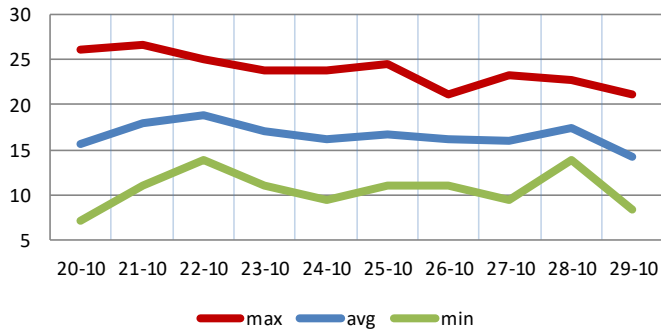
	HU+exYU+AL					
	MAX	AVG	MIN	LT max	LT avg	LT min
20-10	27.0	21.0	16.5	17.5	12.6	8.2
21-10	24.8	20.0	16.1	17.5	12.6	8.2
22-10	23.6	16.7	13.1	17.5	12.6	8.2
23-10	24.0	15.6	10.9	17.5	12.6	8.2
24-10	24.5	16.5	11.4	17.5	12.6	8.2
25-10	19.7	16.6	13.5	17.5	12.6	8.2
26-10	20.1	15.9	12.6	17.5	12.6	8.2
27-10	18.5	15.5	11.7	17.5	12.6	8.2
28-10	18.7	13.7	9.9	17.5	12.6	8.2
29-10	20.2	14.4	10.1	17.5	12.6	8.2

**RO - Bucharest**



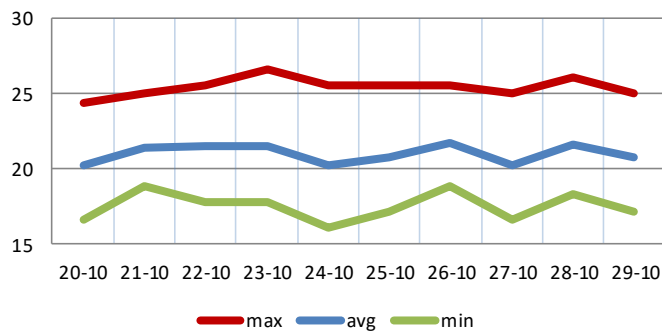
	Romania					
	MAX	AVG	MIN	LT max	LT avg	LT min
20-10	24.4	15.7	8.3	18	11.9	6.5
21-10	28.9	19.1	10.6	18	11.9	6.5
22-10	27.8	20.6	15.0	18	11.9	6.5
23-10	24.4	17.9	11.7	18	11.9	6.5
24-10	23.9	16.6	10.0	18	11.9	6.5
25-10	25.6	17.8	10.6	18	11.9	6.5
26-10	23.9	18.6	14.4	18	11.9	6.5
27-10	23.9	17.5	11.7	18	11.9	6.5
28-10	23.9	18.4	14.4	18	11.9	6.5
29-10	22.8	15.1	8.3	18	11.9	6.5

**BG - Sofia**



	Bulgaria					
	MAX	AVG	MIN	LT max	LT avg	LT min
20-10	26.1	15.6	7.2	17.1	11.3	7.1
21-10	26.7	18.0	11.1	17.1	11.3	7.1
22-10	25.0	18.9	13.9	17.1	11.3	7.1
23-10	23.9	17.0	11.1	17.1	11.3	7.1
24-10	23.9	16.1	9.4	17.1	11.3	7.1
25-10	24.4	16.8	11.1	17.1	11.3	7.1
26-10	21.1	16.1	11.1	17.1	11.3	7.1
27-10	23.3	16.0	9.4	17.1	11.3	7.1
28-10	22.8	17.4	13.9	17.1	11.3	7.1
29-10	21.1	14.3	8.3	17.1	11.3	7.1

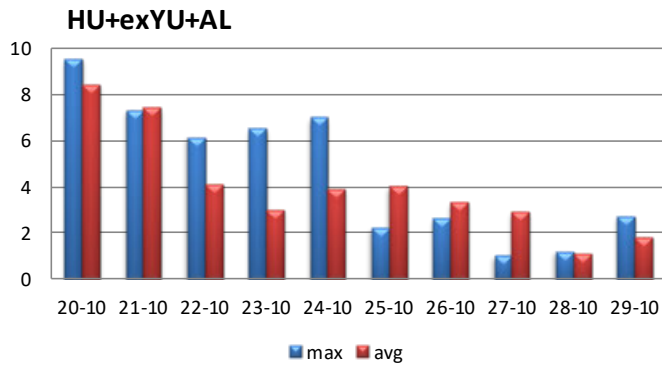
**GR - Athens**



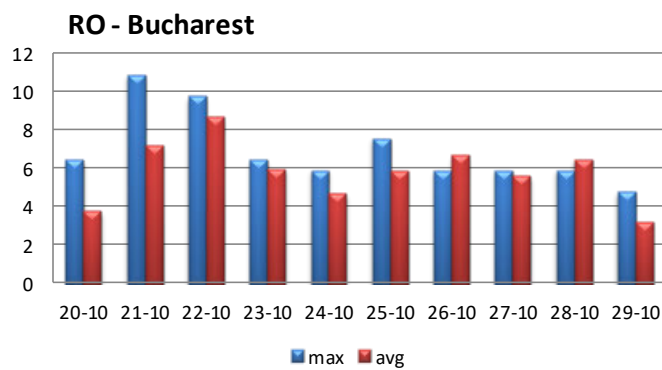
	Greece					
	MAX	AVG	MIN	LT max	LT avg	LT min
20-10	24.4	20.3	16.7	24.1	19	16
21-10	25.0	21.4	18.9	24.1	19	16
22-10	25.6	21.5	17.8	24.1	19	16
23-10	26.7	21.5	17.8	24.1	19	16
24-10	25.6	20.3	16.1	24.1	19	16
25-10	25.6	20.8	17.2	24.1	19	16
26-10	25.6	21.8	18.9	24.1	19	16
27-10	25.0	20.3	16.7	24.1	19	16
28-10	26.1	21.6	18.3	24.1	19	16
29-10	25.0	20.8	17.2	24.1	19	16

## 8. Temperature deviation forecast

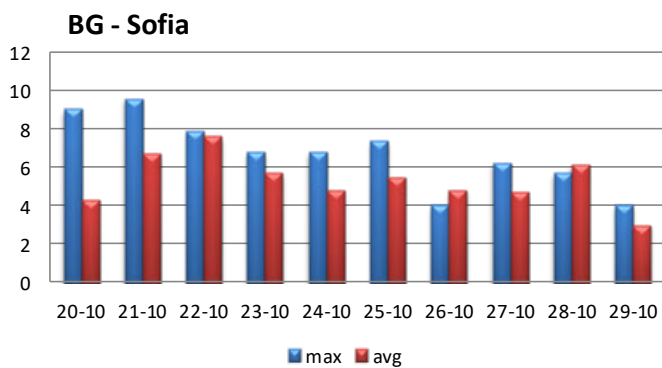
Deviation against long term monthly average



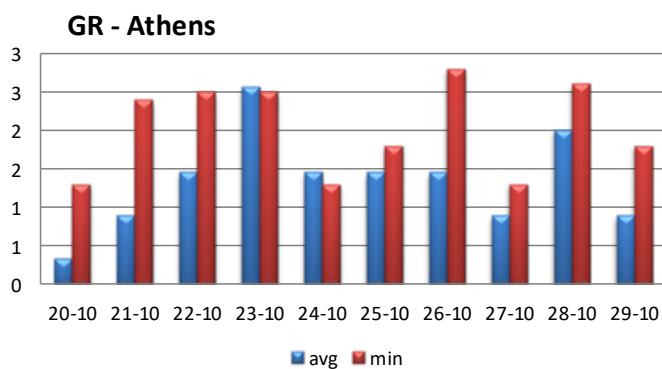
HU+exYU+AL temp. dev.		
	MAX	AVG
20-10	9.5	8.4
21-10	7.3	7.4
22-10	6.1	4.1
23-10	6.5	3.0
24-10	7.0	3.9
25-10	2.2	4.0
26-10	2.6	3.3
27-10	1.0	2.9
28-10	1.2	1.1
29-10	2.7	1.8



Romania temp. dev.		
	MAX	AVG
20-10	6.4	3.8
21-10	10.9	7.2
22-10	9.8	8.7
23-10	6.4	6.0
24-10	5.9	4.7
25-10	7.6	5.9
26-10	5.9	6.7
27-10	5.9	5.6
28-10	5.9	6.5
29-10	4.8	3.2



Bulgaria temp. dev.		
	MAX	AVG
20-10	9.0	4.3
21-10	9.6	6.7
22-10	7.9	7.6
23-10	6.8	5.7
24-10	6.8	4.8
25-10	7.3	5.5
26-10	4.0	4.8
27-10	6.2	4.7
28-10	5.7	6.1
29-10	4.0	3.0

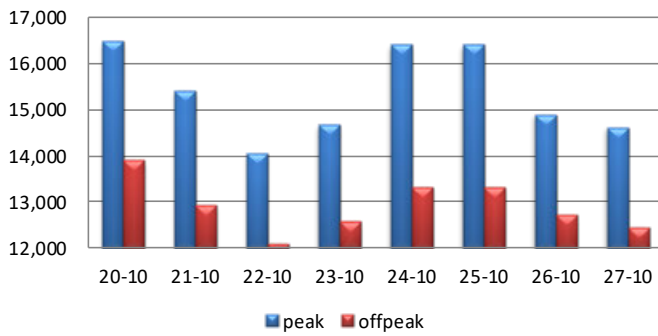


Greece temp. dev.		
	MAX	AVG
20-10	0.3	1.3
21-10	0.9	2.4
22-10	1.5	2.5
23-10	2.6	2.5
24-10	1.5	1.3
25-10	1.5	1.8
26-10	1.5	2.8
27-10	0.9	1.3
28-10	2.0	2.6
29-10	0.9	1.8

## 9. Consumption forecast

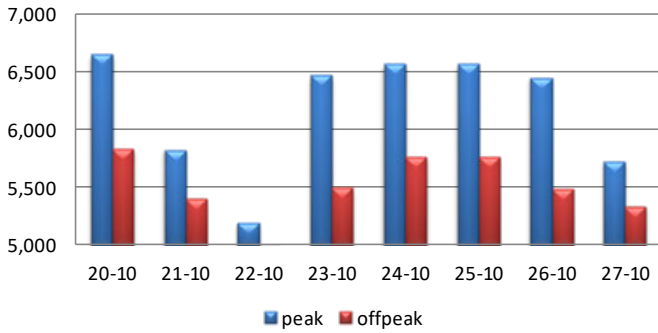
MW average

**HU+exYU+AL**



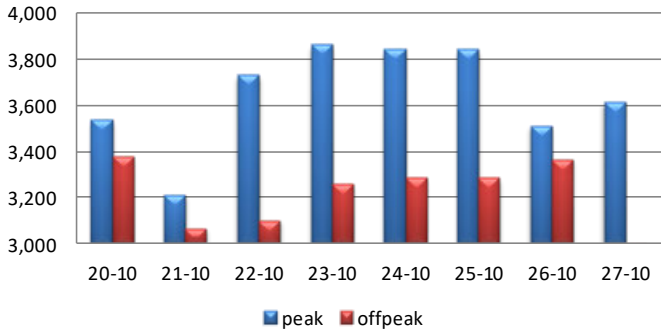
HU+exYU+AL		
MW	Peak	Offpeak
20-10	16,485	13,890
21-10	15,406	12,913
22-10	14,054	12,107
23-10	14,651	12,565
24-10	16,392	13,321
25-10	16,390	13,320
26-10	14,883	12,712
27-10	14,607	12,456

**Romania**



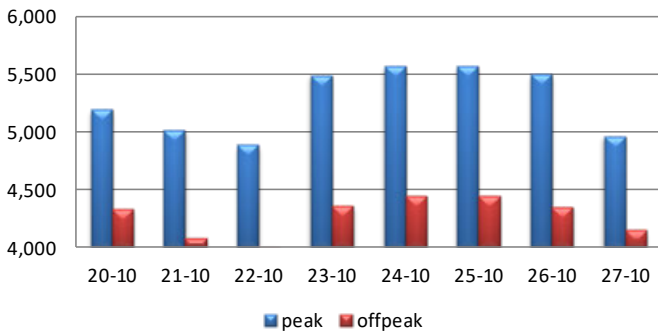
Romania		
MW	Peak	Offpeak
20-10	6,649	5,828
21-10	5,827	5,399
22-10	5,195	4,988
23-10	6,468	5,498
24-10	6,564	5,760
25-10	6,564	5,760
26-10	6,446	5,487
27-10	5,727	5,335

**Bulgaria**



Bulgaria		
MW	Peak	Offpeak
20-10	3,537	3,381
21-10	3,214	3,068
22-10	3,729	3,103
23-10	3,863	3,257
24-10	3,841	3,284
25-10	3,841	3,284
26-10	3,512	3,366
27-10	3,612	2,987

**Greece**

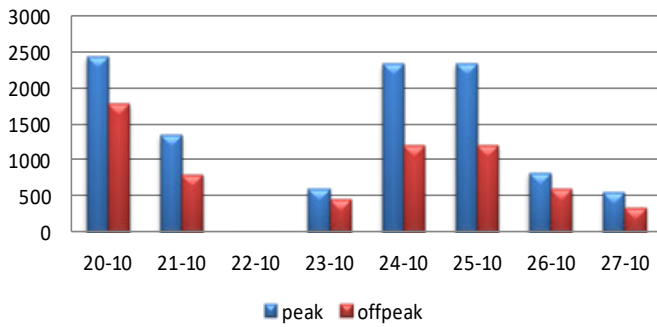


Greece		
MW	Peak	Offpeak
20-10	5,188	4,325
21-10	5,016	4,079
22-10	4,884	3,947
23-10	5,486	4,352
24-10	5,564	4,447
25-10	5,564	4,447
26-10	5,492	4,350
27-10	4,959	4,149

## 10. Consumption forecast change

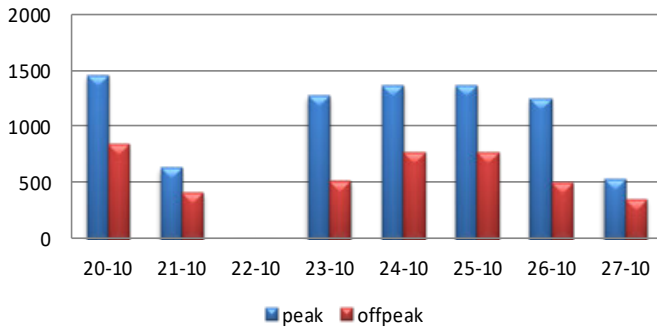
Consumption changes compared to the day with minimal consumption in last 7 day, MW average

**HU+exYU+AL**



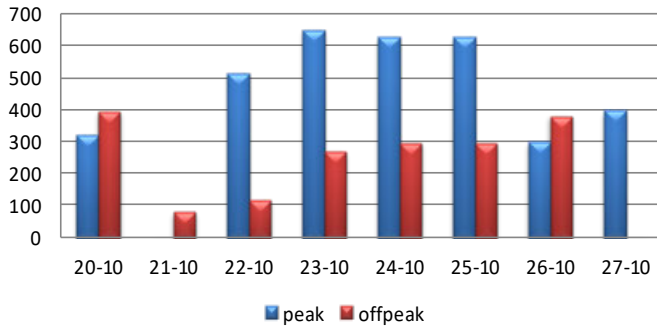
HU+exYU+AL		
MW	Peak	Offpeak
20-10	2,431	1,783
21-10	1,352	806
22-10	0	0
23-10	597	458
24-10	2,338	1,214
25-10	2,336	1,213
26-10	829	605
27-10	553	349

**Romania**



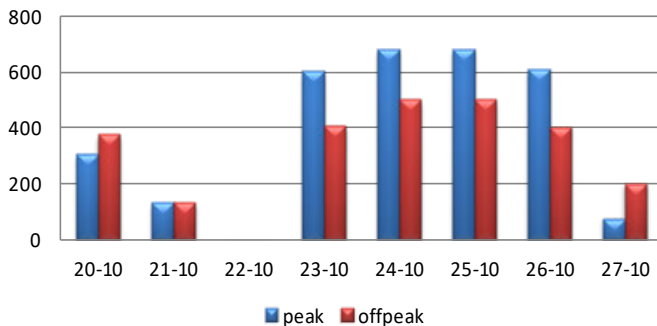
Romania		
MW	Peak	Offpeak
20-10	1,454	840
21-10	632	411
22-10	0	0
23-10	1,273	510
24-10	1,369	772
25-10	1,369	772
26-10	1,251	499
27-10	532	347

**Bulgaria**



Bulgaria		
MW	Peak	Offpeak
20-10	323	394
21-10	0	81
22-10	515	116
23-10	649	270
24-10	627	297
25-10	627	297
26-10	298	379
27-10	398	0

**Greece**

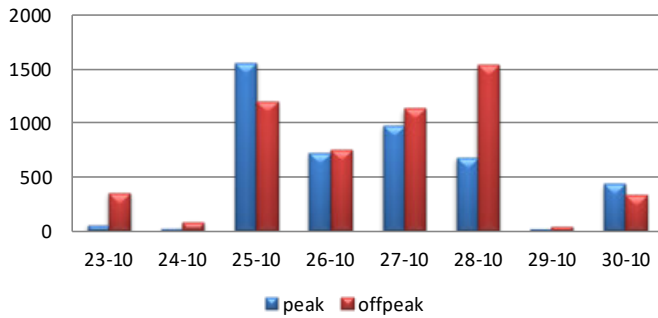


Greece		
MW	Peak	Offpeak
20-10	304	378
21-10	132	132
22-10	0	0
23-10	602	405
24-10	680	500
25-10	680	500
26-10	608	403
27-10	75	202

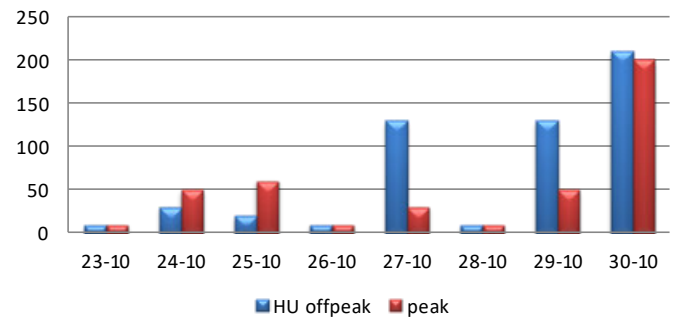
## 11. Wind and solar forecast

MW average

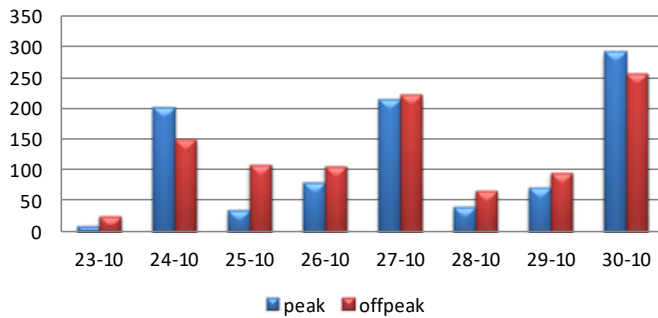
**RO wind**



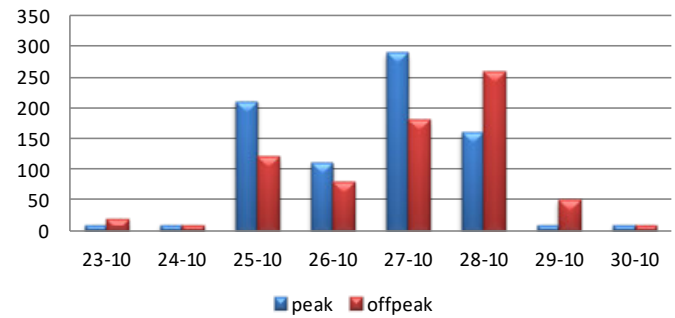
**HU-wind**



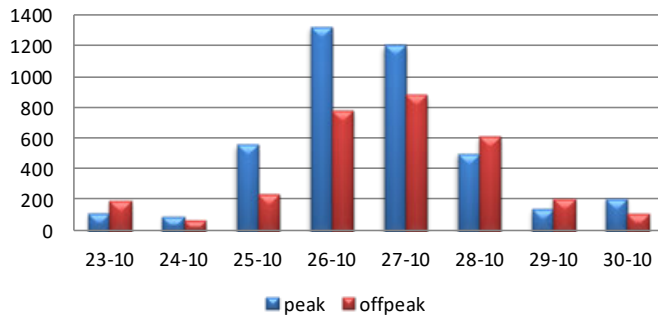
**HR-wind**



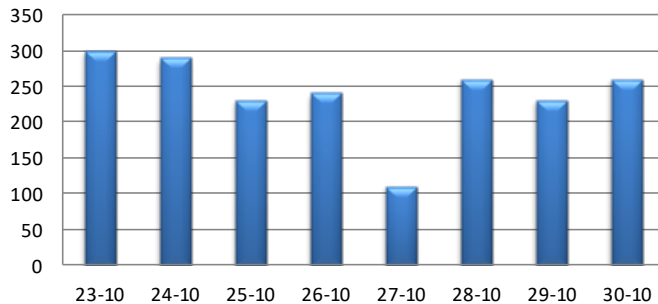
**BG-wind**



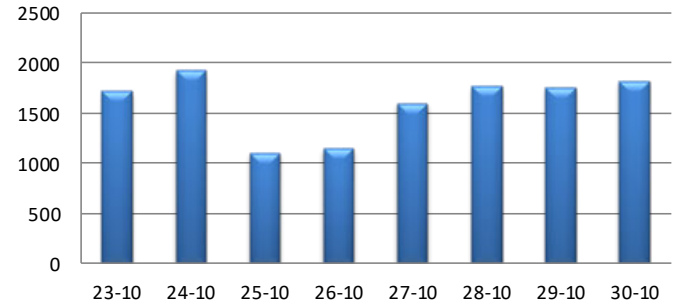
**GR-wind**



**RO solar peak average**



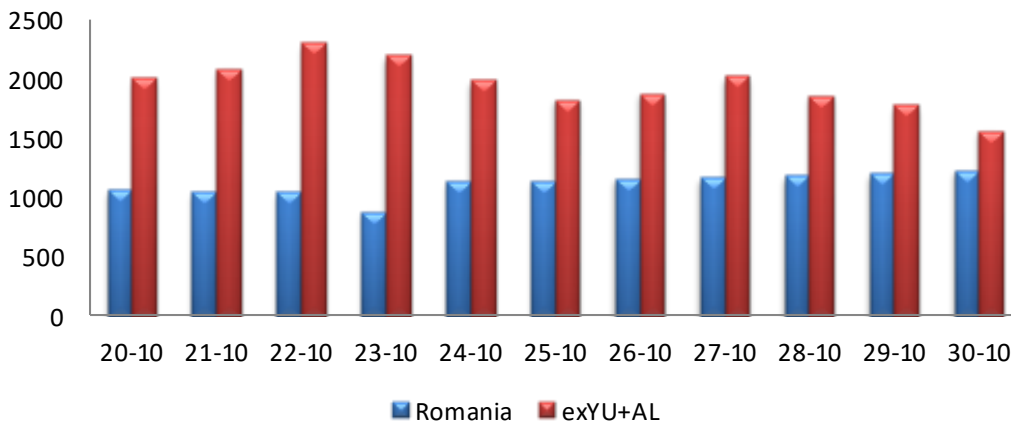
**GR solar peak average**



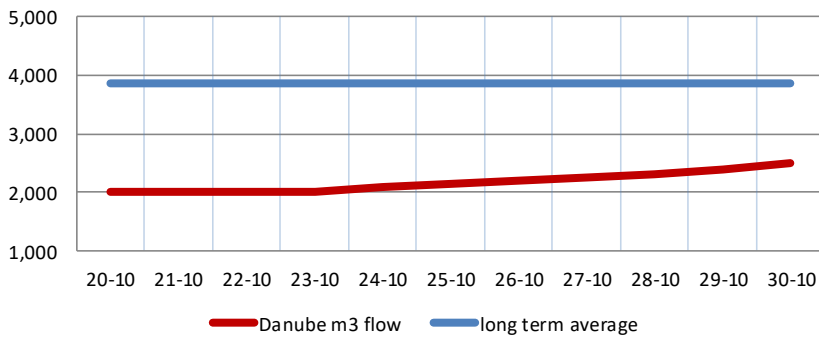
	Romania Wind		Hungary Wind		Croatia Wind		Bulgaria Wind		Greece Wind		RO Solar	GR Solar
	Peak	Offpeak	Peak	Offpeak	Peak	Offpeak	Peak	Offpeak	Peak	Offpeak	Peak	Peak
23-10	50	350	10	10	10	26	10	20	117.6	194.4	300	1723
24-10	20	80	30	50	202	149	10	10	96	69.6	290	1929
25-10	1550	1200	20	60	35	109	210	120	559.2	238.8	230	1103
26-10	720	750	10	10	80	106	110	80	1321.2	781.2	240	1148
27-10	970	1130	130	30	215	222	290	180	1201.2	879.6	110	1598
28-10	680	1530	10	10	40	66	160	260	498	612	260	1772
29-10	10	40	130	50	71	95	10	50	140.4	210	230	1757
30-10	430	330	210	200	292	257	10	10	208.8	111.6	260	1823

## 12. Hydro generation forecasts

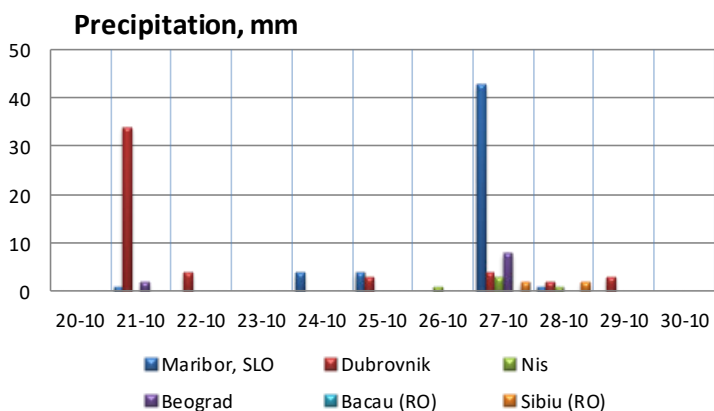
### Run-of-river generation in MW



### Danube flow: forecast and the long term average - m3/s



## Precipitation (mm)



	Maribor	Dubrovnik	Nis	Beograd	Bacau	Sibiu
20-10	0.0	0.0	0.0	0.0	0.0	0.0
21-10	<u>1.0</u>	<u>34.0</u>	0.0	<u>2.0</u>	0.0	0.0
22-10	0.0	<u>4.0</u>	0.0	0.0	0.0	0.0
23-10	0.0	0.0	0.0	0.0	0.0	0.0
24-10	<u>4.0</u>	0.0	0.0	0.0	0.0	0.0
25-10	<u>4.0</u>	<u>3.0</u>	0.0	0.0	0.0	0.0
26-10	0.0	0.0	<u>1.0</u>	0.0	0.0	0.0
27-10	<u>43.0</u>	<u>4.0</u>	<u>3.0</u>	<u>8.0</u>	0.0	<u>2.0</u>
28-10	<u>1.0</u>	<u>2.0</u>	<u>1.0</u>	0.0	0.0	<u>2.0</u>
29-10	0.0	<u>3.0</u>	0.0	0.0	0.0	0.0
30-10	0.0	0.0	0.0	0.0	0.0	0.0

## 13. NTC and NTC changes

### Day-ahead NTC

27-Oct-23	1	2	3	4	5	6	7	8	9	10	11	12	13	14	15	16	17	18	19	20	21	22	23	24
AT>HU	0	0	0	0	0	0	0	0	0	0	0	0	0	0	0	0	0	0	0	0	0	0	0	0
AT>SI	0	0	0	0	0	0	0	0	0	0	0	0	0	0	0	0	0	0	0	0	0	0	0	0
SK>HU	0	0	0	0	0	0	0	0	0	0	0	0	0	0	0	0	0	0	0	0	0	0	0	0
CZ>SK	0	0	0	0	0	0	0	0	0	0	0	0	0	0	0	0	0	0	0	0	0	0	0	0
RO>HU	0	0	0	0	0	0	0	0	0	0	0	0	0	0	0	0	0	0	0	0	0	0	0	0
UA>HU	0	0	0	0	0	0	0	0	0	0	0	0	0	0	0	0	0	0	0	0	0	0	0	0
SI>IT	657	657	657	641	641	641	641	660	660	660	660	660	660	660	660	660	660	660	660	660	660	660	660	624
IT>SI	680	680	680	680	680	680	680	660	660	660	660	660	660	660	660	660	660	660	660	660	660	660	660	680
SI>HR	1500	1500	1500	1500	1500	1500	1500	1500	1500	1500	1500	1500	1500	1500	1500	1500	1500	1500	1500	1500	1500	1500	1500	1500
HR>SI	678	678	678	689	689	689	689	760	794	753	615	615	781	794	794	795	795	786	620	620	620	753	615	512
RO>RS	300	300	300	300	300	300	300	300	300	300	300	300	300	300	300	300	300	300	300	300	300	300	300	300
BG>RS	300	300	300	300	300	300	300	300	300	300	300	300	300	300	300	300	300	300	300	300	300	300	300	300
RS>HU	700	700	700	700	700	700	700	700	700	700	700	700	700	700	700	700	700	700	700	700	700	700	700	700
HU>RS	500	500	500	500	500	500	500	500	500	500	500	500	500	500	500	500	500	500	500	500	500	500	500	500
RS>HR	150	150	150	150	150	150	150	150	150	150	150	150	150	150	150	150	150	150	150	150	150	150	150	150
HR>RS	150	150	150	150	150	150	150	150	150	150	150	150	150	150	150	150	150	150	150	150	150	150	150	150
BH>RS	400	400	400	400	400	400	400	400	400	400	400	400	400	400	400	400	400	400	400	400	400	400	400	400
BH>HR	500	500	500	500	500	500	500	500	500	500	500	500	500	500	500	500	500	500	500	500	500	500	500	500
RS>MK	500	500	500	500	500	500	500	500	500	500	500	500	500	500	500	500	500	500	500	500	500	500	500	500
MK>GR	400	400	400	400	400	400	400	400	400	400	400	400	400	400	400	400	400	400	400	400	400	400	400	400
BG>MK	456	456	456	456	456	456	456	456	456	456	456	456	456	456	456	456	456	456	456	456	456	456	456	456
BG>GR	669	669	669	669	669	669	669	669	669	669	669	669	669	669	669	669	669	669	669	669	669	669	669	669
GR>ITA	500	500	500	500	500	500	500	500	500	500	500	500	500	500	500	500	500	500	500	500	500	500	500	500
ITA>GR	500	500	500	500	500	500	500	500	500	500	500	500	500	500	500	500	500	500	500	500	500	500	500	500

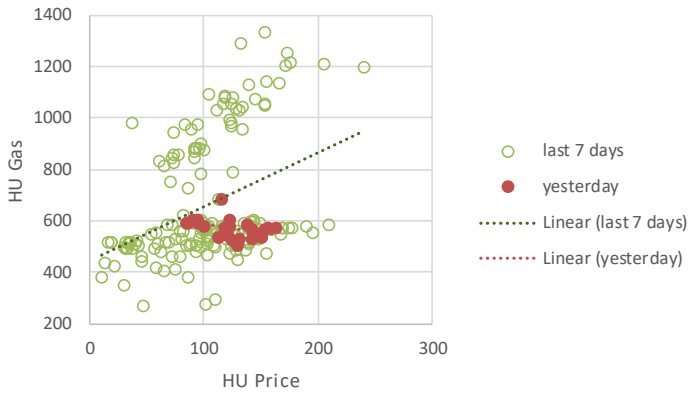
### NTC change comparing to previous day

	1	2	3	4	5	6	7	8	9	10	11	12	13	14	15	16	17	18	19	20	21	22	23	24
AT>HU	0	0	0	0	0	0	0	0	0	0	0	0	0	0	0	0	0	0	0	0	0	0	0	0
AT>SI	0	0	0	0	0	0	0	0	0	0	0	0	0	0	0	0	0	0	0	0	0	0	0	0
SK>HU	0	0	0	0	0	0	0	0	0	0	0	0	0	0	0	0	0	0	0	0	0	0	0	0
CZ>SK	0	0	0	0	0	0	0	0	0	0	0	0	0	0	0	0	0	0	0	0	0	0	0	0
RO>HU	0	0	0	0	0	0	0	0	0	0	0	0	0	0	0	0	0	0	0	0	0	0	0	0
UA>HU	0	0	0	0	0	0	0	0	0	0	0	0	0	0	0	0	0	0	0	0	0	0	0	0
SI>IT	0	0	0	0	0	0	0	0	0	0	0	0	0	0	0	0	0	0	0	0	0	0	0	0
IT>SI	0	0	0	0	0	0	0	0	0	0	0	0	0	0	0	0	0	0	0	0	0	0	0	0
SI>HR	0	0	0	0	0	0	0	0	0	0	0	0	0	0	0	0	0	0	0	0	0	0	0	0
HR>SI	0	0	0	0	0	0	0	0	0	0	0	0	0	0	0	0	0	0	0	0	0	0	0	0
RO>RS	0	0	0	0	0	0	0	0	0	0	0	0	0	0	0	0	0	0	0	0	0	0	0	0
BG>RS	0	0	0	0	0	0	0	0	0	0	0	0	0	0	0	0	0	0	0	0	0	0	0	0
RS>HU	0	0	0	0	0	0	0	0	0	0	0	0	0	0	0	0	0	0	0	0	0	0	0	0
HU>RS	0	0	0	0	0	0	0	0	0	0	0	0	0	0	0	0	0	0	0	0	0	0	0	0
RS>HR	0	0	0	0	0	0	0	0	0	0	0	0	0	0	0	0	0	0	0	0	0	0	0	0
HR>RS	0	0	0	0	0	0	0	0	0	0	0	0	0	0	0	0	0	0	0	0	0	0	0	0
BH>RS	0	0	0	0	0	0	0	0	0	0	0	0	0	0	0	0	0	0	0	0	0	0	0	0
BH>HR	0	0	0	0	0	0	0	0	0	0	0	0	0	0	0	0	0	0	0	0	0	0	0	0
RS>MK	0	0	0	0	0	0	0	0	0	0	0	0	0	0	0	0	0	0	0	0	0	0	0	0
MK>GR	0	0	0	0	0	0	0	0	0	0	0	0	0	0	0	0	0	0	0	0	0	0	0	0
BG>MK	0	0	0	0	0	0	0	0	0	0	0	0	0	0	0	0	0	0	0	0	0	0	0	0
BG>GR	0	0	0	0	0	0	0	0	0	0	0	0	0	0	0	0	0	0	0	0	0	0	0	0
GR>ITA	0	0	0	0	0	0	0	0	0	0	0	0	0	0	0	0	0	0	0	0	0	0	0	0
ITA>GR	0	0	0	0	0	0	0	0	0	0	0	0	0	0	0	0	0	0	0	0	0	0	0	0

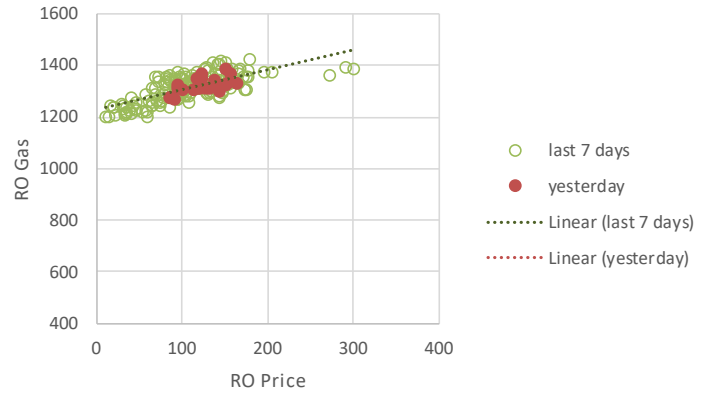
## 14. Generation price curves

### Gas generation

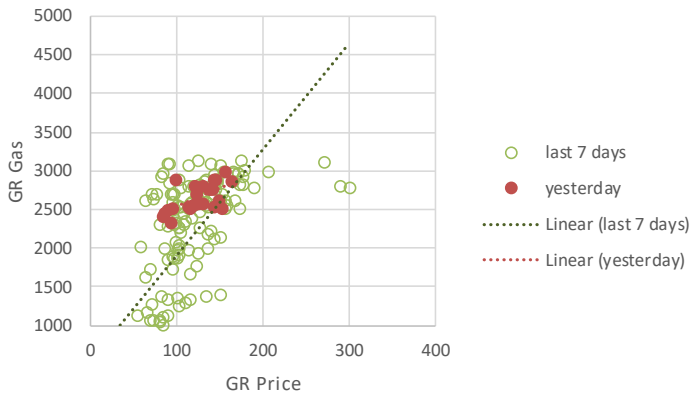
**HU GAS generation**



**RO GAS generation**



**GR GAS generation**

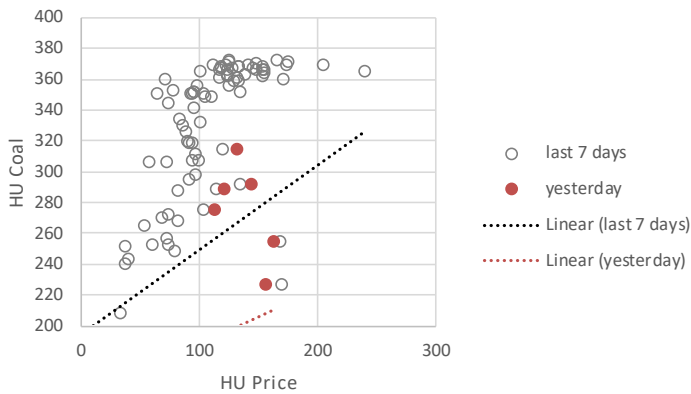


**BG GAS generation**

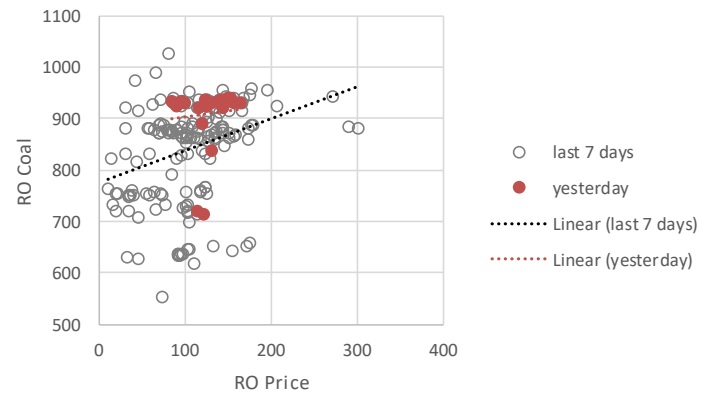


### Coal generation

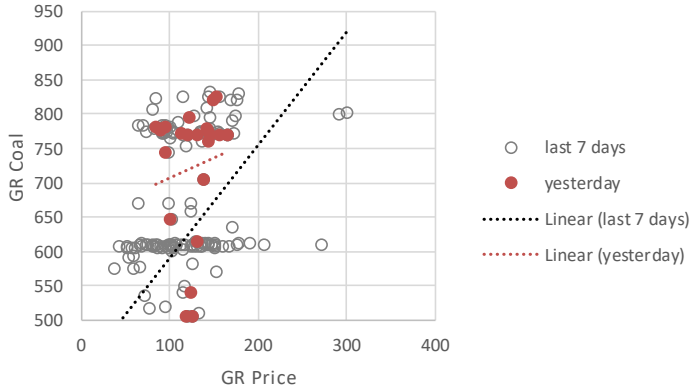
**HU COAL generation**



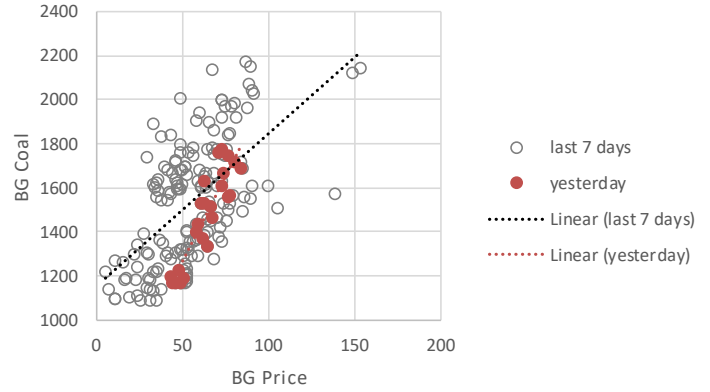
**RO COAL generation**



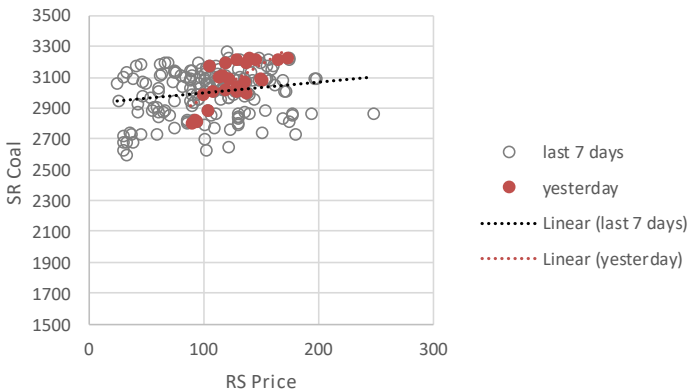
**GR COAL generation**



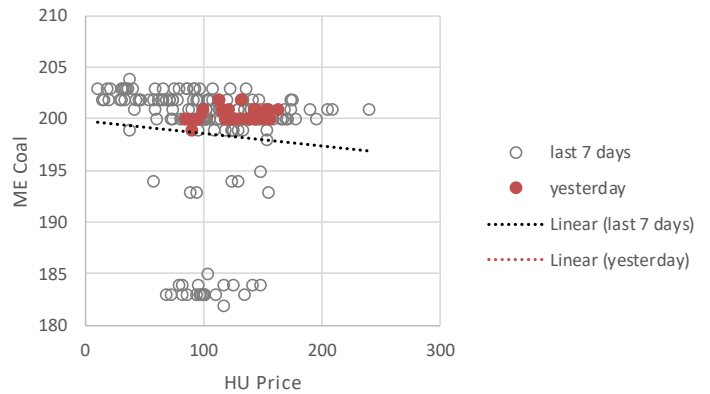
**BG COAL generation**



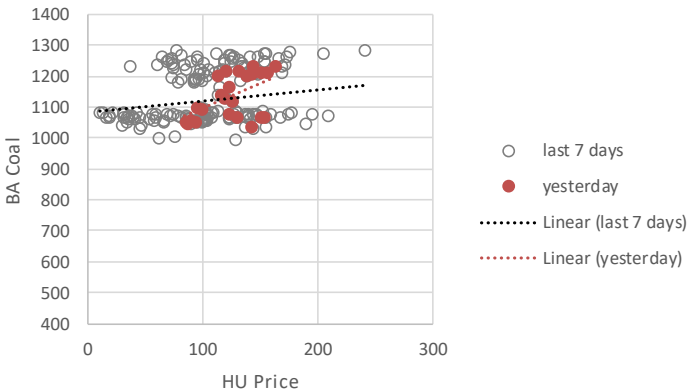
**RS COAL generation**



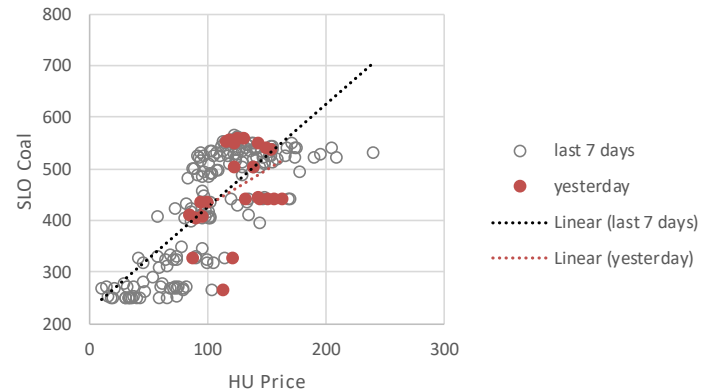
**ME COAL generation**



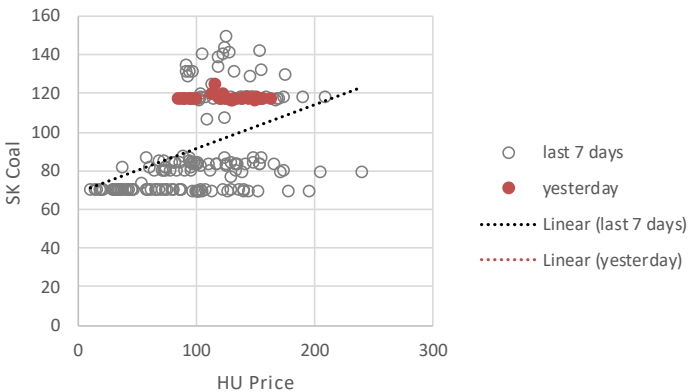
**BA COAL generation**



**SLO COAL generation**

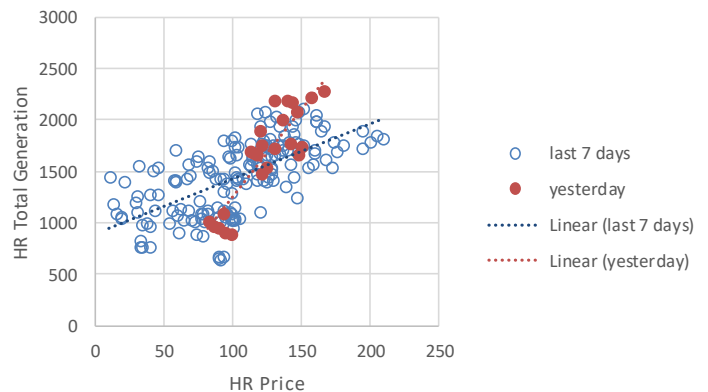


**SK COAL generation**



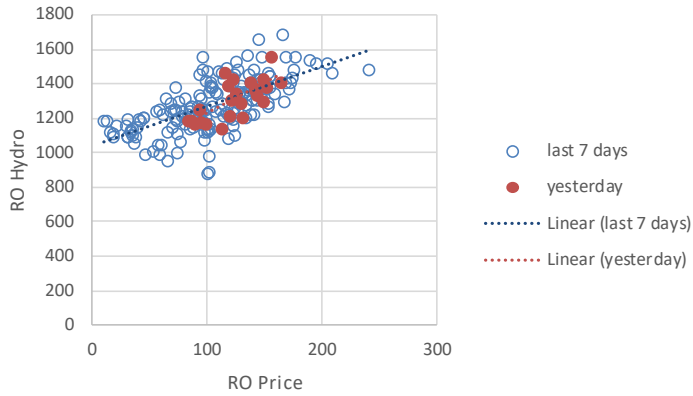
**Croatian total generation**

**HR total generation**

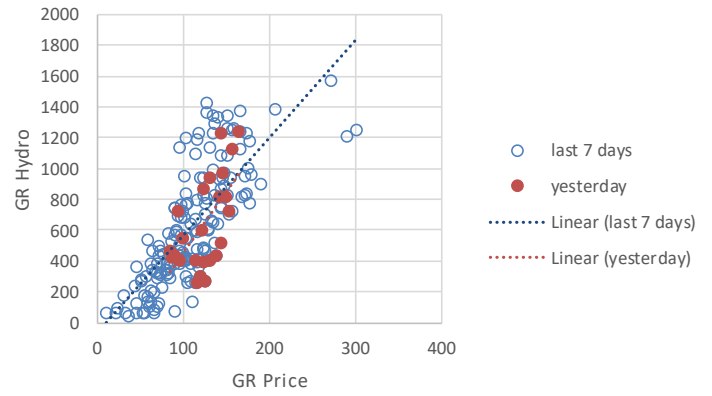


Hydro generation

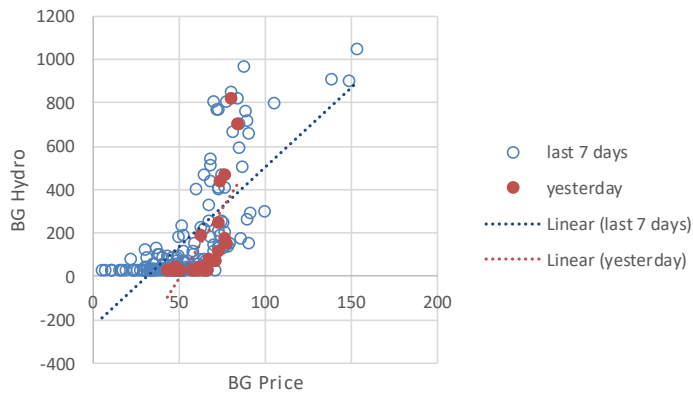
**RO HYDRO generation**



**GR HYDRO generation**



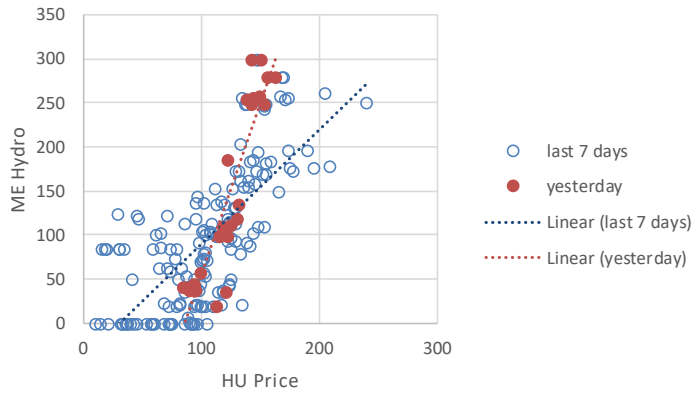
**BG HYDRO generation**



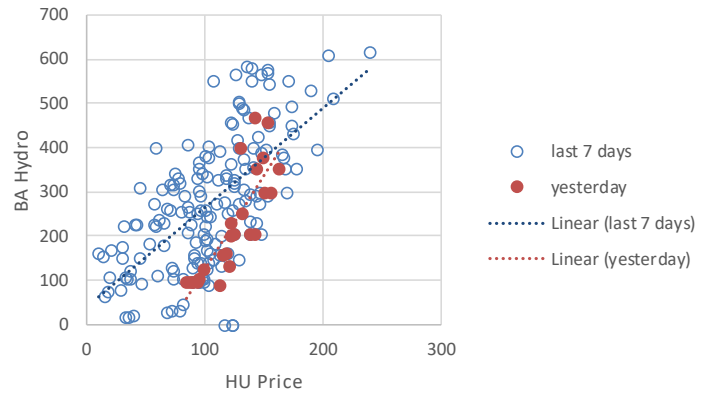
**RS HYDRO generation**



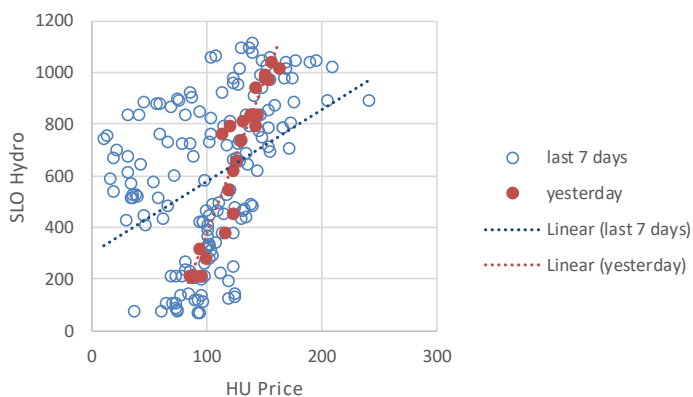
**ME HYDRO generation**



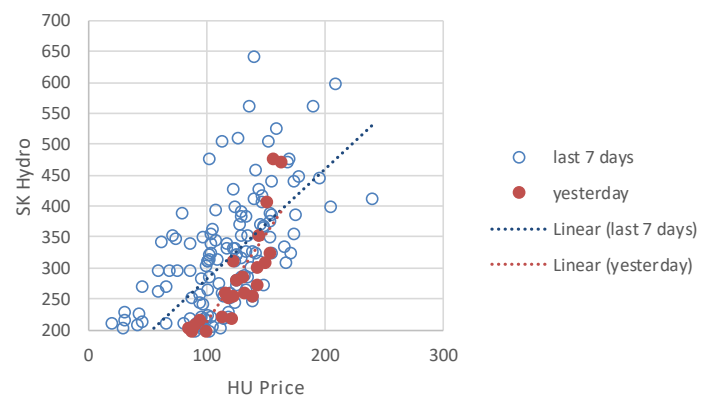
**BA HYDRO generation**



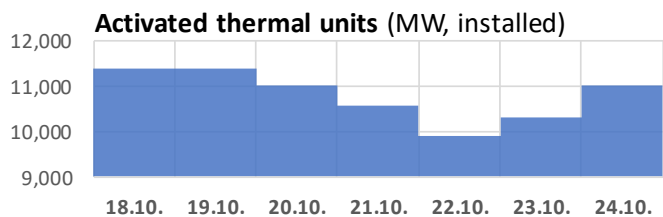
**SLO HYDRO generation**



**SK HYDRO generation**



## 15. Activation of thermal units



Hungary		Hungary							
	MW	18.10.	19.10.	20.10.	21.10.	22.10.	23.10.	24.10.	
Csepel	GT1	140	OFF	OFF	OFF	OFF	OFF	OFF	
	GT2	140	OFF	OFF	OFF	OFF	OFF	OFF	
	ST	120	OFF	OFF	OFF	OFF	OFF	OFF	
Dunamenti	G14	140	OFF	OFF	OFF	OFF	OFF	OFF	
	G15	150	OFF	OFF	OFF	OFF	OFF	OFF	
	G7	270	ON	ON	OFF	OFF	OFF	OFF	
	G8	130	ON	ON	OFF	OFF	OFF	OFF	
Gonyi	U1	430	ON	ON	ON	ON	ON	ON	
Kelenfoldi	GT	130	OFF	OFF	OFF	OFF	OFF	OFF	
Lorinci	U1	170	OFF	OFF	OFF	OFF	OFF	OFF	
Matrai	U3	220	ON	ON	ON	ON	ON	ON	
	U4	230	OFF	OFF	OFF	OFF	OFF	OFF	
	U5	230	ON	ON	ON	ON	OFF	ON	
Paks	U1U2	500	ON	ON	ON	ON	ON	ON	
	U3U4	500	ON	ON	ON	ON	ON	ON	
	U5U6	500	ON	ON	ON	ON	ON	ON	
	U7U8	500	ON	ON	ON	ON	ON	ON	

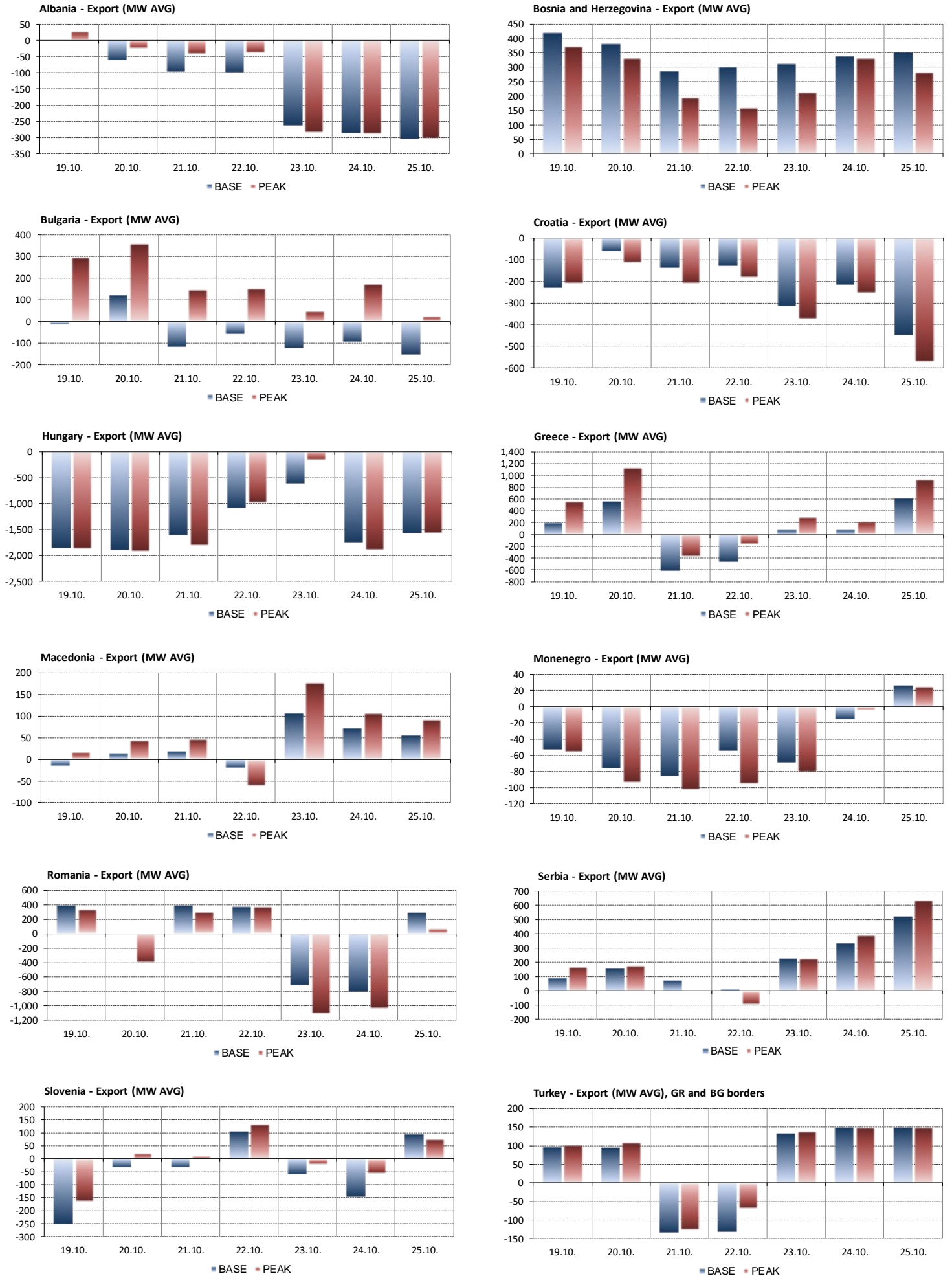
Bulgaria		Bulgaria							
	MW	18.10.	19.10.	20.10.	21.10.	22.10.	23.10.	24.10.	
Kozloduy NPP	G5	1000	ON	ON	ON	ON	ON	ON	
	G6	1000	OFF	OFF	OFF	OFF	OFF	OFF	
Bobov Dol	G1	210	OFF	OFF	ON	ON	OFF	ON	
	G2	210	ON	ON	ON	ON	OFF	ON	
	G3	210	ON	ON	OFF	OFF	OFF	OFF	
Galabovo	G1	335	ON	ON	ON	ON	ON	ON	
	G2	335	OFF	OFF	OFF	OFF	OFF	OFF	
Maritsa 2	G1	185	ON	ON	ON	ON	ON	ON	
	G2	185	OFF	OFF	OFF	OFF	OFF	OFF	
	G3	182	OFF	OFF	OFF	OFF	OFF	OFF	
	G4	185	OFF	OFF	OFF	OFF	OFF	OFF	
	G5	240	OFF	OFF	OFF	OFF	OFF	OFF	
	G6	240	OFF	OFF	OFF	OFF	OFF	OFF	
	G7	240	OFF	OFF	OFF	OFF	OFF	OFF	
	G8	240	ON	ON	ON	ON	ON	ON	
Maritsa 3	G1	227	ON	ON	ON	ON	ON	ON	
	G2	227	ON	ON	ON	ON	ON	ON	
	G3	227	ON	ON	ON	ON	ON	ON	
	G4	227	ON	ON	ON	OFF	OFF	ON	

Montenegro and Slovenia		Montenegro and Slovenia							
	MW	18.10.	19.10.	20.10.	21.10.	22.10.	23.10.	24.10.	
Pljevlja	G1	210	ON	ON	ON	ON	ON	ON	
Krsko	U1	700	OFF	OFF	OFF	OFF	OFF	OFF	
Sostanj	G5	275	OFF	OFF	OFF	OFF	OFF	OFF	
	G6	600	ON	ON	ON	ON	ON	ON	

Romania		Romania							
	MW	18.10.	19.10.	20.10.	21.10.	22.10.	23.10.	24.10.	
Cernavoda NPP	U1	700	ON	ON	ON	ON	ON	ON	
	U2	700	ON	ON	ON	ON	ON	ON	
OMV	ALL	860	OFF	OFF	OFF	OFF	OFF	OFF	
Rovinari	G3	330	OFF	OFF	OFF	OFF	OFF	OFF	
	G4	330	OFF	OFF	OFF	OFF	OFF	OFF	
	G6	330	ON	ON	ON	ON	ON	ON	
Turceni	G3	330	OFF	OFF	OFF	OFF	OFF	OFF	
	G4	330	ON	ON	ON	ON	ON	ON	
	G5	330	ON	ON	ON	ON	ON	ON	
Isalnita	G7	315	OFF	OFF	OFF	OFF	OFF	OFF	
	G8	315	OFF	OFF	OFF	OFF	OFF	OFF	
Minitia	G2	210	OFF	OFF	OFF	OFF	OFF	OFF	
	G3	235	OFF	OFF	OFF	OFF	OFF	OFF	
	G4	210	OFF	OFF	OFF	OFF	OFF	OFF	
	G5	210	OFF	OFF	OFF	OFF	OFF	OFF	
Brazi	G6	210	OFF	OFF	OFF	OFF	OFF	OFF	
	G5	105	OFF	OFF	OFF	OFF	OFF	OFF	
Galati	G6	105	OFF	OFF	OFF	OFF	OFF	OFF	
	G3	105	OFF	OFF	OFF	OFF	OFF	OFF	
	G5	105	OFF	OFF	OFF	OFF	OFF	OFF	
Iernut	G4	100	OFF	OFF	OFF	OFF	OFF	OFF	
	G5	200	ON	ON	ON	ON	ON	ON	
Bucuresti Sud	G6	200	OFF	OFF	OFF	OFF	OFF	OFF	
	U3	100	OFF	OFF	OFF	OFF	OFF	OFF	
	U4	100	OFF	OFF	OFF	OFF	OFF	OFF	
Bucuresti Vest	U5	125	OFF	OFF	OFF	OFF	OFF	OFF	
	U6	125	OFF	OFF	OFF	OFF	OFF	OFF	
Bucuresti Vest	G2	125	OFF	OFF	OFF	OFF	OFF	OFF	
	G3+4	195	OFF	OFF	OFF	OFF	OFF	OFF	

Bosnia		Bosnia							
	MW	18.10.	19.10.	20.10.	21.10.	22.10.	23.10.	24.10.	
Gacko	G5	300	ON	ON	ON	ON	ON	ON	
Kakanj	G5	110	OFF	OFF	OFF	OFF	OFF	OFF	
	G6	110	ON	ON	ON	ON	ON	ON	
	G7	220	ON	ON	ON	OFF	OFF	ON	
Stanari	G1	300	ON	ON	ON	ON	ON	ON	
	G3	100	OFF	OFF	OFF	OFF	OFF	OFF	
Tuzla	G4	200	ON	ON	ON	ON	ON	ON	
	G5	200	ON	ON	ON	ON	ON	ON	
	G6	200	OFF	OFF	OFF	OFF	OFF	OFF	
Ugljevik	G1	300	ON	ON	ON	ON	ON	ON	

## 16. Electricity export per country



## 17. SPOT Market Prices

Rise - Green, Drop - Red

BASE	26.10.	25.10.	24.10.	23.10.	22.10.	Workweek average		
	THU	WED	TUE	MON	SUN	Previous	Current	Change
Hungary	125.91	124.18	125.65	134.54	69.22	122.50	128.12	4.6%
Germany	121.35	124.31	117.99	125.02	63.95	108.58	122.44	12.8%
Austria	121.55	123.15	121.83	126.26	66.12	118.22	123.75	4.7%
Slovenia	123.76	123.16	124.43	134.29	67.22	122.35	127.29	4.0%
Romania	125.60	124.01	125.33	138.61	68.92	130.69	129.32	-1.1%
Bulgaria	125.60	124.01	125.33	138.61	73.40	130.39	129.32	-0.8%
Croatia	124.30	123.48	124.88	134.57	67.76	123.23	127.64	3.6%
Serbia	124.35	124.38	126.65	129.07	61.51	126.80	126.70	-0.1%
Greece	125.41	123.79	125.27	138.42	76.62	129.04	129.16	0.1%
Turkey	77.01	79.20	83.54	84.16	68.16	79.80	82.30	3.1%
IT NORD	144.24	133.58	140.90	144.59	127.69	156.13	139.69	-10.5%

PEAK	26.10.	25.10.	24.10.	23.10.	22.10.	Workweek average		
	THU	WED	TUE	MON	SUN	Previous	Current	Change
Hungary	142.33	137.85	138.20	145.23	79.39	133.96	140.43	4.8%
Germany	137.17	138.13	131.05	136.92	71.02	123.80	135.37	9.3%
Austria	136.42	136.87	134.12	135.80	74.44	128.05	135.60	5.9%
Slovenia	138.63	136.90	135.97	144.76	76.10	133.67	139.21	4.1%
Romania	141.86	137.69	137.55	151.91	78.86	147.83	142.38	-3.7%
Bulgaria	141.86	137.69	137.55	151.91	78.86	147.22	142.38	-3.3%
Croatia	139.60	137.18	136.77	145.15	76.97	135.20	139.70	3.3%
Serbia	138.55	136.24	140.70	142.54	62.02	141.00	139.83	-0.8%
Greece	141.46	137.30	137.42	151.52	78.86	145.16	142.08	-2.1%
Turkey	81.58	82.12	84.17	88.01	59.06	82.73	84.77	2.5%
IT NORD	161.90	150.34	153.99	154.49	119.47	165.00	152.94	-7.3%

OFFPEAK	26.10.	25.10.	24.10.	23.10.	22.10.	Workweek average		
	THU	WED	TUE	MON	SUN	Previous	Current	Change
Hungary	109.49	110.51	113.10	123.85	59.06	111.05	115.82	4.3%
Germany	105.52	110.48	104.92	113.13	56.87	93.36	109.51	17.3%
Austria	106.68	109.44	109.55	116.72	57.81	108.38	111.90	3.3%
Slovenia	108.89	109.42	112.90	123.81	58.34	111.03	115.38	3.9%
Romania	109.35	110.34	113.11	125.32	58.97	113.56	116.26	2.4%
Bulgaria	109.35	110.34	113.11	125.32	67.94	113.56	116.26	2.4%
Croatia	109.01	109.79	112.99	123.98	58.56	111.26	115.59	3.9%
Serbia	110.14	112.51	112.59	115.59	61.00	112.60	113.56	0.9%
Greece	109.35	110.28	113.11	125.32	74.38	112.92	116.24	2.9%
Turkey	72.44	76.29	82.91	80.31	77.27	76.87	79.84	3.9%
IT NORD	126.59	116.81	127.80	134.69	135.92	147.27	126.43	-14.1%

## Market Arbitration Profits (in EUR/MWh)

BASE	26.10.	25.10.	24.10.	23.10.	22.10.
	THU	WED	TUE	MON	SUN
HU > RS	B -1.76	-0.09	0.62	-5.99	-10.35
P	-3.94	-1.88	2.17	-3.20	-21.00
O	0.41	1.68	-0.95	-8.79	0.28
HU > GR	B -1.12	-0.93	-2.45	1.23	-1.84
P	-1.07	-0.95	-1.81	5.22	-7.45
O	-1.18	-0.92	-0.67	-2.76	3.75
RO > RS	B -1.41	0.16	1.27	-9.60	-7.41
P	-3.58	-1.81	3.10	-9.42	-16.85
O	0.73	2.12	-0.56	-9.80	2.03

## 18. Daily Auctions

(all prices in EUR/MW, volumes in MW AVG)

Auctions		THU	WED	TUE	MON
HU > HR	B	0.00	0	0.00	0
	P	0.00	0	0.00	0
	O	0.00	0	0.00	0
HR > HU	B	0.00	0	0.00	0
	P	0.00	0	0.00	0
	O	0.00	0	0.00	0
RS > HU	B	0.89	799	0.72	804
	P	0.94	771	0.93	782
	O	0.85	828	0.52	826
HU > RS	B	0.20	701	0.29	696
	P	0.16	730	0.27	718
	O	0.24	672	0.32	674
RO > RS	B	0.16	267	0.21	281
	P	0.27	258	0.36	267
	O	0.06	277	0.05	296
RS > RO	B	0.00	292	0.00	286
	P	0.00	294	0.00	277
	O	0.00	290	0.00	296
BG > RS	B	0.07	433	0.09	460
	P	0.08	427	0.09	459
	O	0.06	439	0.10	461
RS > HR	B	0.39	386	0.80	389
	P	0.49	387	1.15	389
	O	0.29	386	0.45	389
BA > RS	B	0.21	380	0.18	387
	P	0.21	404	0.16	412
	O	0.21	357	0.21	362
BA > HR	B	0.63	400	0.44	400
	P	0.90	400	0.43	400
	O	0.37	399	0.45	399
BA > ME	B	0.50	410	1.00	397
	P	0.51	405	1.04	390
	O	0.48	415	0.95	404
ME > AL	B	0.03	563	0.00	248
	P	0.05	595	0.01	252
	O	0.02	531	0.00	245
AL > GR	B	0.01	337	0.00	316
	P	0.00	289	0.00	302
	O	0.01	386	0.00	330
RS > MK	B	0.09	274	0.10	203
	P	0.03	340	0.07	251
	O	0.15	209	0.12	155
MK > GR	B	0.33	375	0.15	340
	P	0.01	397	0.07	354
	O	0.64	353	0.24	326
TR > GR	B	34.01	2	32.79	2
	P	42.89	2	41.71	2
	O	25.14	2	23.87	2
ME > XK	B	0.00	0	0.00	0
	P	0.00	0	0.00	0
	O	0.00	0	0.00	0
XK > ME	B	0.00	0	0.00	0
	P	0.00	0	0.00	0
	O	0.00	0	0.00	0
ME > IT	B	0.04	723	0.01	682
	P	0.08	744	0.02	668
	O	0.00	702	0.00	696
IT > ME	B	7.31	420	16.63	407
	P	4.84	421	16.19	409
	O	9.78	419	17.06	404
MK > XK	B	0.11	317	0.40	328
	P	0.06	323	0.39	334
	O	0.15	311	0.40	321
XK > MK	B	0.01	408	0.00	391
	P	0.00	309	0.00	309
	O	0.01	507	0.00	473
AL > XK	B	0.00	272	0.00	257
	P	0.00	271	0.00	257
	O	0.00	272	0.00	257
XK > AL	B	0.24	288	0.09	281
	P	0.16	295	0.06	281
	O	0.33	282	0.12	280

\*Day ahead prices - day ahead capacity

## 19. FUTURES - Phelix DE, IT and HUDEX (Price EUR/

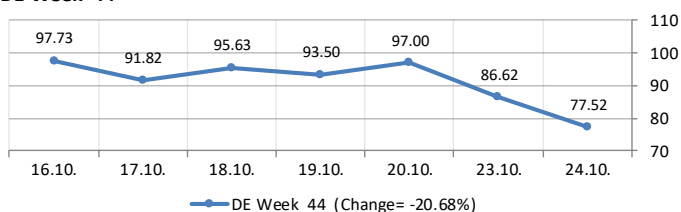
	7-day	24.10.	23.10.	20.10.	19.10.	18.10.	17.10.	16.10.
DE November 2022:	-6.29%	107.57	113.01	115.79	115.65	116.79	114.06	114.79
DE December 2022:	-6.02%	112.57	118.02	120.44	121.07	122.63	119.98	119.78
DE Q1+Y 2023 Base	-4.00%	130.17	135.67	136.18	136.09	137.20	134.08	135.60
DE Q2+Y 2023 Base	-3.09%	114.49	119.05	119.02	118.33	118.48	116.11	118.14
DE Q2+Y 2023 Base	-1.01%	125.06	128.17	129.22	128.41	127.84	126.19	126.34
DE Cal 24 Base	-2.48%	127.56	131.63	131.92	131.59	131.76	129.50	130.81
DE Cal 25 Base	-4.40%	116.61	118.67	118.82	120.38	121.40	121.23	121.98
DE Cal 24 Peak	-2.18%	144.78	147.13	148.00	145.67	146.70	145.10	148.00
DE Cal 25 Peak	-3.39%	137.74	139.00	139.42	140.33	141.08	141.30	142.58

	7-day	24.10.	23.10.	20.10.	19.10.	18.10.	17.10.	16.10.
HU November 2022	-6.32%	123.42	129.27	129.27	124.42	129.03	126.85	131.74
HU December 2022:	-4.61%	128.95	132.88	132.88	133.63	134.83	132.95	135.18
HU Q1+Y 2023 Base	-3.59%	146.57	150.06	150.06	147.96	150.19	146.04	152.02
HU Q2+Y 2023 Base	-2.66%	124.68	127.52	127.52	124.38	127.29	124.55	128.09
HU Q2+Y 2023 Base	-1.03%	138.37	141.58	141.58	137.45	140.14	137.28	139.81
HU Cal 24 Base	-2.39%	141.30	144.32	144.32	140.75	144.01	141.58	144.76
HU Cal 25 Base	-4.37%	124.26	126.33	126.33	126.46	128.36	127.26	129.94
HU Cal 24 Peak	-1.77%	159.28	162.39	162.39	159.75	162.44	160.67	162.15
HU Cal 25 Peak	-2.99%	146.03	148.12	148.12	147.63	150.02	149.28	150.53

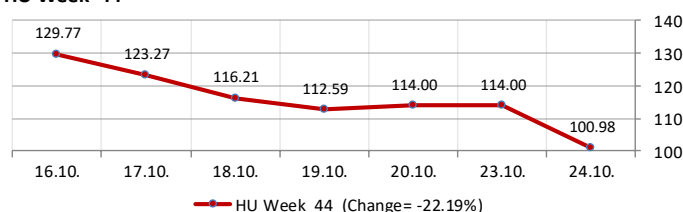
	7-day	24.10.	23.10.	20.10.	19.10.	18.10.	17.10.	16.10.
IT November 2023	-2.60%	138.87	143.02	144.07	143.45	144.97	141.50	142.58
IT December 2023	-1.70%	148.79	152.61	153.57	152.21	154.31	150.21	151.36
IT Q1+Y 2023 Base	-0.34%	157.39	161.17	161.48	161.70	160.19	157.03	157.93
IT Q2+Y 2023 Base	-1.73%	138.07	142.38	141.94	141.01	141.93	138.64	140.50
IT Q2+Y 2023 Base	0.79%	146.48	149.55	149.72	147.76	147.51	144.25	145.33
IT Cal 24 Base	-0.28%	149.99	153.71	153.41	152.78	152.11	149.42	150.41
IT Cal 25 Base	-1.64%	129.25	129.70	130.13	131.04	131.12	130.40	131.41
IT Cal 24 Peak	-0.57%	162.17	165.62	165.25	163.76	163.35	160.54	163.10
IT Cal 25 Peak	#DIV/0!	0.00	0.00	0.00	0.00	0.00	0.00	0.00

	7-day	24.10.	23.10.	20.10.	19.10.	18.10.	17.10.	16.10.
DE Week 44	-20.68%	77.52	86.62	97.00	93.50	95.63	91.82	97.73
DE Week 45	-14.68%	96.47	105.75	107.08	107.00	111.30	109.53	113.07
HU Week 44	-22.19%	100.98	114.00	114.00	112.59	116.21	123.27	129.77
HU Week 45	-5.02%	120.69	123.50	123.50	122.00	127.30	125.53	127.07
IT Week 44	-8.23%	129.86	133.38	135.00	135.33	138.86	134.98	141.50
IT Week 45	-6.55%	135.50	140.00	142.00	142.00	142.00	140.00	145.00

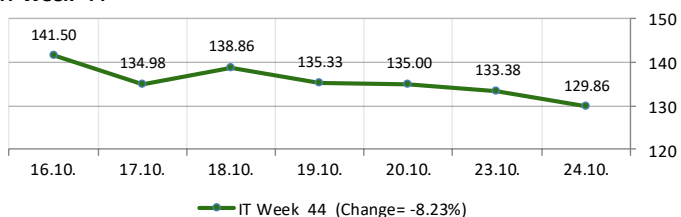
DE Week 44



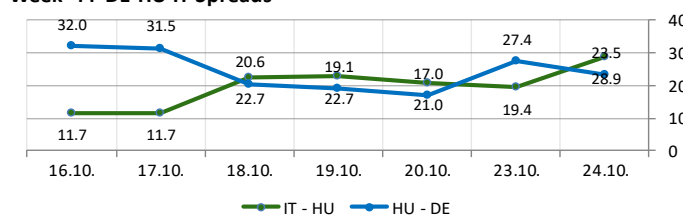
HU Week 44



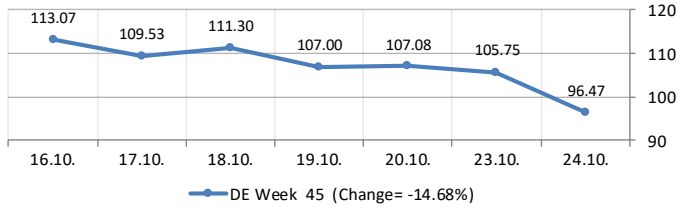
IT Week 44



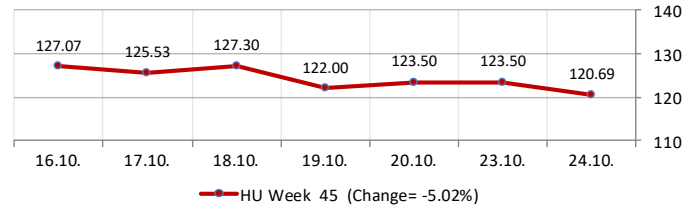
Week 44 DE-HU-IT Spreads



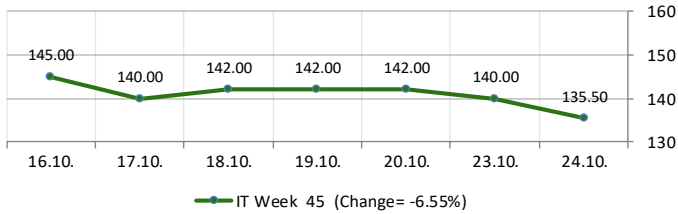
**DE Week 45**



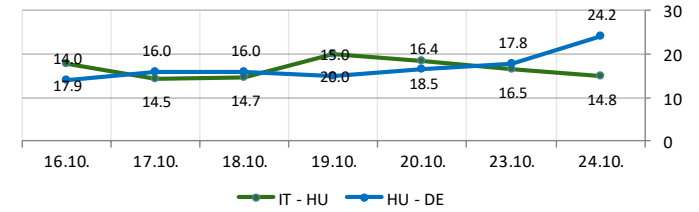
**HU Week 45**



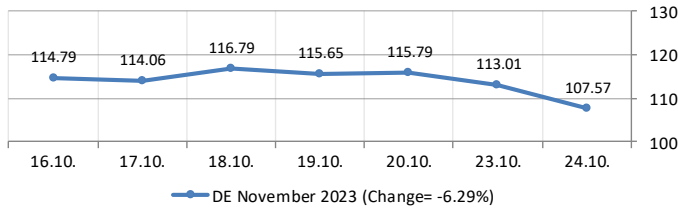
**IT Week 45**



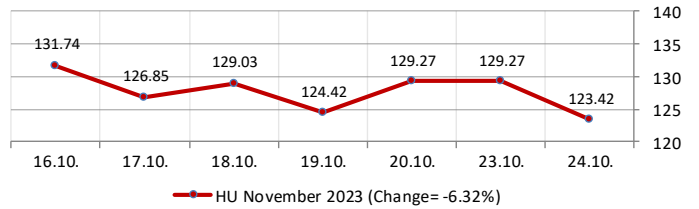
**Week 45 DE-HU-IT Spreads**



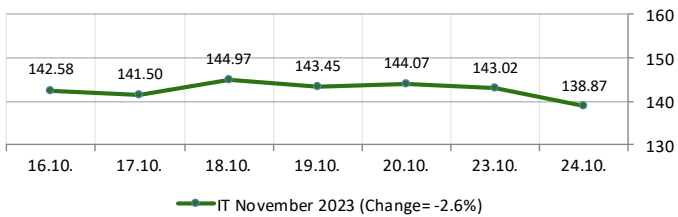
**DE November 2023**



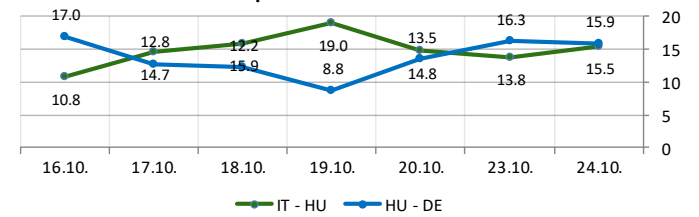
**HU November 2023**



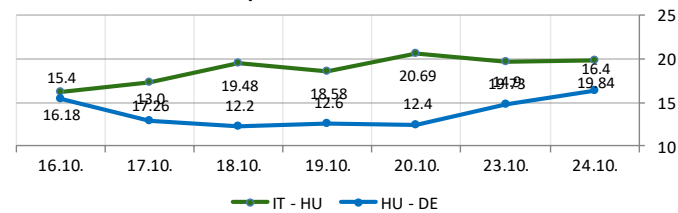
**IT November 2023**



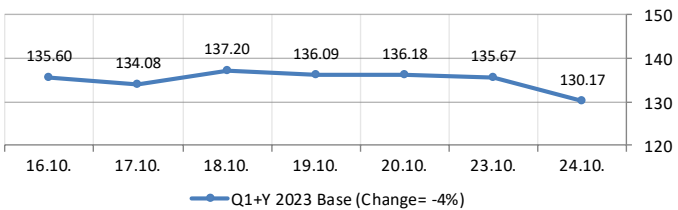
**November 2023 DE-HU-IT Spreads**



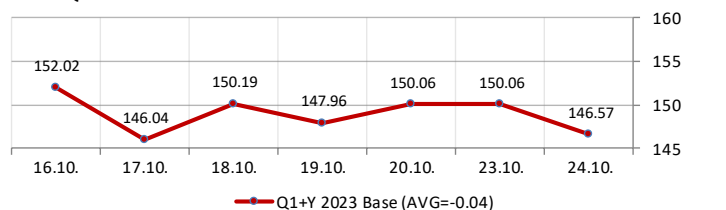
**December 2023 DE-HU-IT Spreads**



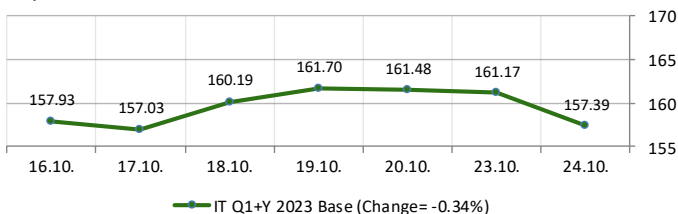
**DE Q1+Y 2023 Base**



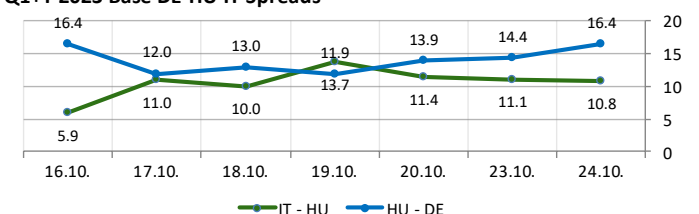
**HU Q1+Y 2023 Base**



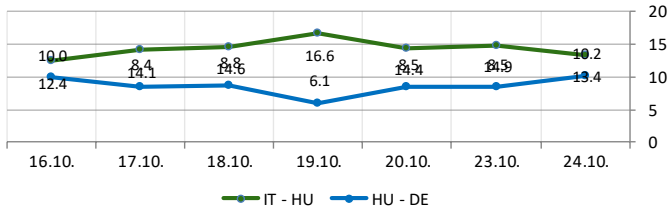
**IT Q1+Y 2023 Base**



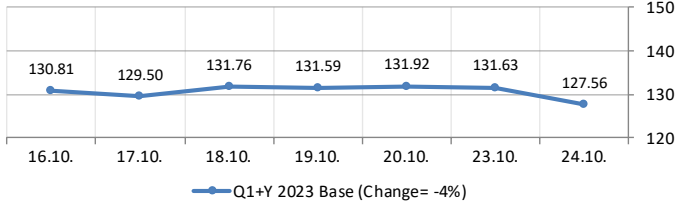
**Q1+Y 2023 Base DE-HU-IT Spreads**



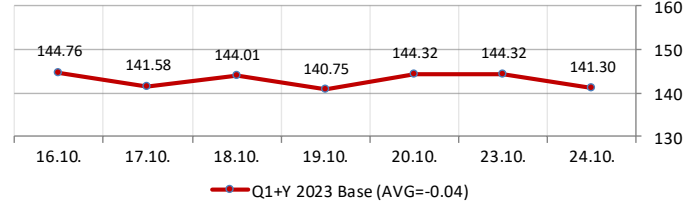
Q2+Y 2023 Base DE-HU-IT Spreads



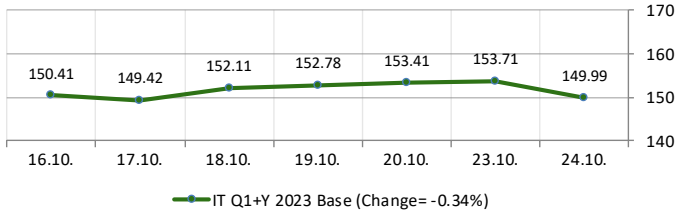
DE Cal 24 Base



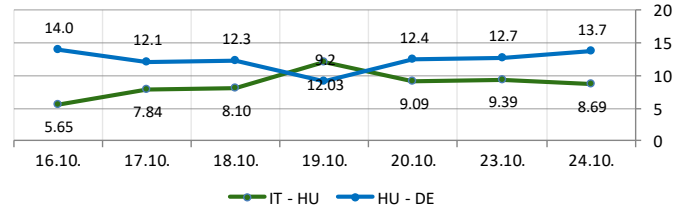
HU Cal 24 Base



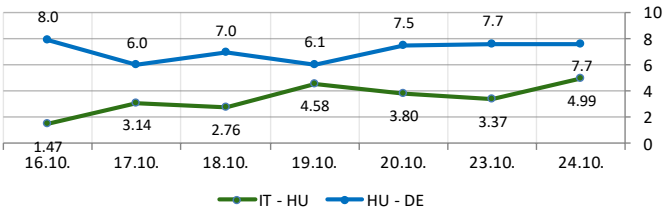
IT Cal 24 Base



Cal 24 Base DE-HU-IT Spreads



Cal 25 Base DE-HU-IT Spreads



**20. Power flows—Hourly values (MW); Base and Peak (MW average)**

		1	2	3	4	5	6	7	8	9	10	11	12	13	14	15	16	17	18	19	20	21	22	23	24	BASE	PEAK
AT > SI	23.10.	419	197	245	208	535	721	485	328	130	8	246	315	389	471	738	718	701	637	625	848	1175	1083	1263	322	534	486
	24.10.	1047	1026	904	923	1104	1374	869	1347	1330	861	283	581	607	1085	1053	1224	1066	1083	1341	1433	1246	1188	1043	927	1039	996
	25.10.	508	-118	-15	214	483	655	611	871	724	486	375	464	528	474	332	521	539	427	961	1009	569	904	583	240	514	570
	26.10.	508	-118	-15	214	483	655	611	871	724	486	375	464	528	474	332	521	539	427	961	1009	569	904	583	240	514	570
HR > SI	23.10.	16	187	212	75	102	-106	-77	-334	-330	-268	44	-57	-53	-25	-84	-79	-204	-623	-600	-438	-451	-315	-378	-249	-168	-226
	24.10.	-238	-184	-148	-123	-251	-474	-512	-500	-439	-231	-140	-179	-206	-165	-228	-318	-258	-397	-461	-496	-243	-291	-356	-100	-289	-293
	25.10.	78	78	178	293	-41	65	131	110	152	170	231	165	105	89	49	64	116	81	-146	-84	-53	-196	-57	-55	63	83
	26.10.	78	78	178	293	-41	65	131	110	152	170	231	165	105	89	49	64	116	81	-146	-84	-53	-196	-57	-55	63	83
IT > SI	23.10.	-494	-469	-599	-467	-531	-534	-275	469	598	-5	-711	-711	-627	-627	-713	-485	196	660	216	-373	-565	-712	48	-306	-236	
	24.10.	-638	-638	-638	-638	-638	-558	152	-516	-694	-608	-608	-608	-608	-608	-709	-709	-706	-665	-628	-657	-725	-612	-615	-603	-647	
	25.10.	-739	-98	-591	-561	-729	-690	-475	-725	-762	-766	-766	-766	-696	-696	-696	-707	-762	-577	-779	-779	-559	-793	-793	-679	-674	-729
	26.10.	-739	-98	-591	-561	-729	-690	-475	-725	-762	-766	-766	-766	-696	-696	-696	-707	-762	-577	-779	-779	-559	-793	-793	-679	-674	-729
AT > HU	23.10.	34	-121	-263	-237	-88	250	310	605	128	-230	-326	-295	-360	-182	160	271	651	855	1219	1344	1291	994	1233	132	307	270
	24.10.	611	644	477	414	509	989	930	1442	1292	523	-117	-23	-32	231	604	937	990	1240	1518	1642	1268	992	982	644	779	734
	25.10.	166	7	-31	-271	39	316	565	650	545	182	-174	-10	-80	-260	-270	26	50	258	835	862	374	506	445	592	222	164
	26.10.	166	7	-31	-271	39	316	565	650	545	182	-174	-10	-80	-260	-270	26	50	258	835	862	374	506	445	592	222	164
HR > HU	23.10.	-533	-529	-545	-448	-500	-468	-85	67	-2	5	-551	-857	-776	-721	-734	-583	-132	84	22	17	-90	-280	-425	-356	-351	-352
	24.10.	-574	-570	-608	-603	-736	-646	-412	-432	-506	-433	-563	-749	-852	-720	-591	-420	-310	-175	-84	-79	-125	-310	-405	-353	-469	-457
	25.10.	-30	-6	-161	-203	-247	-144	-38	-39	-52	-104	-222	-385	-532	-505	-505	-311	-172	-23	-168	-292	-118	-444	-278	-332	-221	-273
	26.10.	-30	-6	-161	-203	-247	-144	-38	-39	-52	-104	-222	-385	-532	-505	-505	-311	-172	-23	-168	-292	-118	-444	-278	-332	-221	-273
RS > HU	23.10.	-200	-116	-38	-47	-23	-51	99	-110	-48	-17	-169	-329	-250	-301	-242	-205	7	42	-8	-100	9	-310	-241	-255	-121	-135
	24.10.	-344	-236	-172	-175	-118	-181	252	244	165	177	9	-119	-69	-85	-83	121	282	404	559	640	402	231	-133	-171	67	167
	25.10.	172	134	258	283	496	220	498	729	645	649	400	89	45	68	61	294	699	733	632	635	696	483	184	154	386	413
	26.10.	172	134	258	283	496	220	498	729	645	649	400	89	45	68	61	294	699	733	632	635	696	483	184	154	386	413
RO > HU	23.10.	134	307	369	233	-284	-1067	-782	-986	-659	-89	-62	-327	-246	-449	-886	-1005	-1170	-841	-1144	-1725	-1545	-1364	-1486	96	-624	-717
	24.10.	-414	-467	-357	-296	-567	-1163	-941	-1140	-959	-261	634	482	648	304	-67	-983	-468	-999	-1399	-1816	-1059	-965	-341	326	-511	-407
	25.10.	177	286	682	413	25	-398	-735	-548	-168	497	749	635	775	590	697	198	105	195	-603	-513	174	-306	-505	-268	90	263
	26.10.	177	286	682	413	25	-398	-735	-548	-168	497	749	635	775	590	697	198	105	195	-603	-513	174	-306	-505	-268	90	263
SK > HU	23.10.	1821	1617	1614	1585	1871	2195	1330	977	770	401	789	1114	823	970	1275	1495	1336	1063	1411	1757	1788	1964	2043	1374	1391	1100
	24.10.	1810	1584	1611	1698	1968	2342	2017	2001	1933	1600	1529	1664	1521	1610	1815	2327	1903	1986	2178	2190	2032	2085	1876	1587	1869	1855
	25.10.	1149	897	627	656	992	1150	1544	1433	1011	601	712	859	835	830	934	1135	1009	1055	1598	1468	1051	1657	1544	1551	1096	1004
	26.10.	1149	897	627	656	992	1150	1544	1433	1011	601	712	859	835	830	934	1135	1009	1055	1598	1468	1051	1657	1544	1551	1096	1004
UA > HU	23.10.	0	0	0	0	0	0	0	0	0	0	0	0	0	0	0	0	0	0	0	0	0	0	0	0	0	0
	24.10.	0	0	0	0	0	0	0	0	0	0	0	0	0	0	0	0	0	0	0	0	0	0	0	0	0	0
	25.10.	0	0	0	0	0	0	0	0	0	0	0	0	0	0	0	0	0	0	0	0	0	0	0	0	0	0
	26.10.	0	0	0	0	0	0	0	0	0	0	0	0	0	0	0	0	0	0	0	0	0	0	0	0	0	0
RO > SR	23.10.	20	20	44	18	16	5	19	19	-26	-17	39	39	38	38	31	20	-20	-125	-100	-115	-25	5	5	5	-2	-17
	24.10.	-10	-20	-21	-22	-72	-72	-72	-71	-71	14	25	27	27	27	25	14	-16	-125	-134	-82	-4	45	48	50	-20	-22
	25.10.	22	27	32	34	37	42	-6	-3	67	65	164	164	164	164	92	43	44	44	42	40	7	35	32	30	58	91
	26.10.	22	27	32	34	37	42	-6	-3	67	65	164	164	164	164	92	43	44	44	42	40	7	35	32	30	58	91
BG > RO	23.10.	-440	-398	-310	-305	-522	-834	344	380	793	1113	670	251	213	163	-86	-76	78	636	742	21	-40	-89	-770	451	83	377
	24.10.	-162	-312	-188	-130	-193	-468	400	414	384	820	1232	967	1082	918	633	-54	711	548	274	-264	192	-223	-168	-8	267	604
	25.10.	-691	-812	-708	-678	-886	-1049	-952	-433	70	759	838	593	632	310	180	-248	-99	445	-58	10	590	-76	-620	-672	-148	286
	26.10.	-612	-255	-205	-211	-364	-599	-271	-29	96	601	971	649	975	1158	920	561	364	161	68	159	222	-264	-480	-338	137	557
RO > UA	23.10.	0	0	0	0	0	0	0	0	0	0	0	0	0	0	0	0	0	0	0	0	0	0	0	0	0	0
	24.10.	0	0	0	0	0	0	0	0	0	0	0	0	0	0	0	0	0	0	0	0	0	0	0	0	0	0
	25.10.	0	0	0	0	0	0	0	0	0	0	0	0	0	0	0	0	0	0	0	0	0	0	0	0	0	0
	26.10.	0	0	0	0	0	0	0	0	0	0	0	0	0	0	0	0	0	0	0	0	0	0	0	0	0	0
BG > RS	23.10.	43	77	54	6	23	17	-128	-129	-80	-82	143	143	143	143	141	59	-14	-256	-281	-148	-196	-106	-43	13	-19	-7
	24.10.	-196	-215	-208	-257	-299	-302	-325	-327	-267	-161	-123	-16	-133	-107	-85	-142	-238	-317	-350	-350	-342	-342	-306	-134	-231	-191
	25.10.	213	213	213	202	238	204	101	72	166	219	195	250	211	253	273	275	250	136	17	-28	219	184	250	250	191	185
	26.10.	69	39	23	42	32	46	-47	-133	35	96	58	170	125	184	176	118	-125	-199	-202	-211	-178	-118	62	49	5	19
BG > MK	23.10.	246	262	251	245	251	275	212	175	175	242	220	236	241	247	249	259	222	-1	-30	-13	134	166	187	201	194	171
	24.10.	259	270	244	261	195	131	52	12	31	111	154	233	280	225	244	130	99	-13	-117	-66	11	108	159	175	133	109
	25.10.	274	264																								

		1	2	3	4	5	6	7	8	9	10	11	12	13	14	15	16	17	18	19	20	21	22	23	24	AVG	PEAK	
BG > GR	23.10.	44	-12	-69	-2	141	174	-836	-799	-850	-850	-600	-95	-59	-73	-36	-140	-576	-658	-745	-118	-149	-194	179	-788	-296	-400	
	24.10.	-89	126	41	0	92	140	-611	-454	31	-261	-616	-344	-410	-340	-377	23	-700	-509	-4	508	-41	-48	-10	-67	-163	-250	
	25.10.	141	356	281	250	337	224	56	58	-179	-669	-702	-446	-418	-297	-424	-433	-633	-900	-328	-411	-1146	-869	-383	46	-270	-487	
	26.10.	334	86	72	57	61	-54	-422	-61	42	-128	-268	-287	-574	-900	-871	-805	-742	-215	0	-71	-176	-235	-100	71	-216	-402	
BG > TR	23.10.	-90	-54	-25	-25	-25	-90	-100	-100	-100	-100	-90	-90	-65	-65	-65	-100	-100	-100	-100	-100	-100	-100	-100	-100	-83	-90	
	24.10.	-89	126	41	0	92	140	-611	-454	31	-261	-616	-344	-410	-340	-377	23	-700	-509	-4	508	-41	-48	-10	-67	-163	-250	
	25.10.	-100	-100	-100	-97	-100	-100	-100	-100	-100	-100	-100	-100	-100	-100	-100	-100	-100	-100	-100	-100	-100	-100	-100	-100	-100	-100	-100
	26.10.	-100	-100	-100	-100	-100	-100	-100	-100	-100	-100	-100	-100	-100	-100	-100	-100	-100	-100	-100	-100	-100	-100	-100	-100	-100	-100	-100
GR > TR	23.10.	-50	-50	-50	-50	-50	-50	-50	-50	-50	-50	-50	-50	-50	-50	-50	-50	-50	-50	-50	-50	-50	-50	-50	-50	-50	-50	
	24.10.	-50	-50	-50	-50	-50	-50	-50	-50	-50	-50	-50	-50	-50	-50	-50	-50	-50	-50	-50	-50	-50	-50	-50	-50	-50	-50	-50
	25.10.	-50	-50	-50	-50	-50	-50	-50	-50	-50	-50	-50	-50	-50	-50	-50	-50	-50	-50	-50	-50	-50	-50	-50	-50	-50	-50	-50
	26.10.	-50	-50	-50	-50	-50	-50	-50	-50	-50	-50	-50	-50	-50	-50	-50	-50	-50	-50	-50	-50	-50	-50	-50	-50	-50	-50	-50
GR > IT	23.10.	336	381	397	469	481	359	-500	-500	-205	90	444	463	483	500	500	414	-331	-500	-500	-500	-360	-33	468	-316	85	72	
	24.10.	500	500	500	500	500	419	-500	-500	442	500	500	500	500	500	283	282	-476	-500	-383	294	339	422	500	500	255	204	
	25.10.	500	499	337	500	500	498	453	495	500	500	500	500	500	500	500	477	467	253	375	457	500	500	500	500	471	461	
	26.10.	500	499	337	500	500	498	453	495	500	500	500	500	500	500	500	477	467	253	375	457	500	500	500	500	471	461	
AL > GR	23.10.	-53	-23	14	34	24	19	109	46	-31	-75	-180	-364	-377	-365	-352	-378	-103	75	147	138	92	149	-17	-70	-64	-155	
	24.10.	23	53	61	49	42	32	61	84	8	-118	-67	-206	-191	-158	-118	-188	77	89	167	204	252	65	58	47	14	-42	
	25.10.	-12	21	35	39	30	39	84	50	33	-45	0	-266	-236	-246	-276	-256	45	24	63	103	7	-29	-60	-44	-37	-88	
	26.10.	-12	21	35	39	30	39	84	50	33	-45	0	-266	-236	-246	-276	-256	45	24	63	103	7	-29	-60	-44	-37	-88	
MK > GR	23.10.	353	369	364	364	372	390	367	378	298	255	249	292	255	264	297	252	313	282	280	259	267	244	304	326	308	275	
	24.10.	304	316	361	379	363	325	196	142	101	164	128	240	237	241	235	197	252	269	323	341	354	366	331	327	271	227	
	25.10.	270	306	343	306	307	307	41	1	-24	-23	-55	68	37	147	154	134	28	58	45	11	79	118	60	74	116	48	
	26.10.	270	306	343	306	307	307	41	1	-24	-23	-55	68	37	147	154	134	28	58	45	11	79	118	60	74	116	48	
RS > MK	23.10.	464	412	379	338	355	332	372	408	310	190	203	216	203	209	191	204	289	396	355	316	353	338	443	448	322	257	
	24.10.	424	344	331	312	320	350	232	288	168	167	132	267	251	232	236	275	279	278	347	361	422	351	345	354	294	249	
	25.10.	231	201	167	46	60	100	96	47	110	38	-2	-22	-67	26	35	6	60	50	109	96	115	101	125	169	79	37	
	26.10.	231	201	167	46	60	100	96	47	110	38	-2	-22	-67	26	35	6	60	50	109	96	115	101	125	169	79	37	
RS > AL	23.10.	0	0	0	0	0	0	0	0	0	0	0	0	0	0	0	0	0	0	0	0	0	0	0	0	0	0	0
	24.10.	0	0	0	0	0	0	0	0	0	0	0	0	0	0	0	0	0	0	0	0	0	0	0	0	0	0	0
	25.10.	0	0	0	0	0	0	0	0	0	0	0	0	0	0	0	0	0	0	0	0	0	0	0	0	0	0	0
	26.10.	0	0	0	0	0	0	0	0	0	0	0	0	0	0	0	0	0	0	0	0	0	0	0	0	0	0	0
RS > ME	23.10.	215	158	162	162	154	188	76	140	143	93	157	220	208	215	220	218	153	171	209	210	152	155	182	136	171	185	
	24.10.	195	184	189	153	172	208	154	-3	143	77	245	265	253	290	290	219	123	95	-20	-36	103	207	266	274	169	162	
	25.10.	137	92	97	121	103	128	108	-20	-28	43	98	207	210	196	196	173	-4	-34	4	-16	-54	36	65	61	80	87	
	26.10.	137	92	97	121	103	128	108	-20	-28	43	98	207	210	196	196	173	-4	-34	4	-16	-54	36	65	61	80	87	
ME > AL	23.10.	86	113	111	131	117	128	-106	-140	-142	-123	-65	36	12	31	42	25	0	-35	55	18	-25	17	53	-12	14	-12	
	24.10.	117	125	127	127	129	119	68	-12	-12	-36	39	93	116	80	109	92	21	111	131	111	85	105	93	72	84	71	
	25.10.	67	107	121	125	116	125	-9	-81	-71	-82	-130	28	58	44	14	8	-97	-55	-69	-39	-122	-70	-91	-68	-7	-33	
	26.10.	67	107	121	125	116	125	-9	-81	-71	-82	-130	28	58	44	14	8	-97	-55	-69	-39	-122	-70	-91	-68	-7	-33	
ME > IT	23.10.	485	485	485	485	485	485	468	420	415	444	483	483	483	483	483	483	478	396	184	236	494	498	483	483	-122	-155	
	24.10.	483	485	485	485	485	485	490	335	495	475	483	483	483	483	483	483	475	400	81	124	373	575	525	485	-290	-265	
	25.10.	465	485	485	485	485	485	533	595	545	448	448	483	485	485	485	493	493	516	526	546	585	615	593	545	179	277	
	26.10.	465	485	485	485	485	485	533	595	545	448	448	483	485	485	485	493	493	516	526	546	585	615	593	545	179	277	
BA > ME	23.10.	423	419	399	424	399	406	304	169	219	315	351	372	362	372	377	347	350	295	201	244	370	386	452	430	349	317	
	24.10.	490	475	470	462	475	500	372	353	421	414	444	465	469	449	480	419	389	425	365	385	386	500	480	455	439	427	
	25.10.	258	327	325	331	313	281	239	181	232	190	280	367	378	352	317	367	228	182	210	246	202	348	345	367	286	279	
	26.10.	258	327	325	331	313	281	239	181	232	190	280	367	378	352	317	367	228	182	210	246	202	348	345	367	286	279	
BA > RS	23.10.	162	194	201	203	197	158	72	35	-4	-14	-159	-171	-174	-175	-212	-213	-87	184	192	209	245	105	30	110	45	-52	
	24.10.	133	162	180	194	166	166	188	214	155	75	105	88	114	113	94	100	148	126	259	262	209	169	151	108	153	137	
	25.10.	12	28	51	23	26	30	42	23	-62	-60	-104	-153	-198	-227	-154	-157	-106	-73	103	0	-43	14	-23	-54	-44	-99	
	26.10.	12	28	51	23	26	30	42	23	-62	-60	-104	-153	-198	-227	-154	-157	-106	-73	103	0	-43	14	-23	-54	-44	-99	
BA > HR	23.10.	-102	-103	-83	-108	-83	-95	-4	112	114	31	-1	-94	-82	-93	-102	-83	-107	-130	11	-54	-199	-230	-232	-226	-81	-49	
	24.10.	-291	-280	-282	-285	-275	-328	-255	-252	-250	-155	-211	-248	-279	-259	-276	-232	-257	-241	-173	-196	-144	-359	-328	-232	-254	-231	
	25.10.	156	144	146	174	183	181	67	180	177	213	118	64	49	103	11	-45	138	253	51	118							